

FL300-2W

rev:7-24-2023

Build-To Sheet



BEP-200-CL-05
Breeze Easy box
355.6 X 212.7 X 308 mm

① x1

x1

FNP-104-00-02
duct tape strip

VTP-407-00-01
long bracket

x1

x2

VTP-408-00-01
short bracket

x2

air pockets
(1 on each side)



roundhead
wood
screw
x8



1-inch
flathead
wood
screw
x4



wire
nut
x4



#8 x 3/8-inch
bracket
securing
screw
x3



BEP-400-01
fan screw kit
(packed on side)

x1

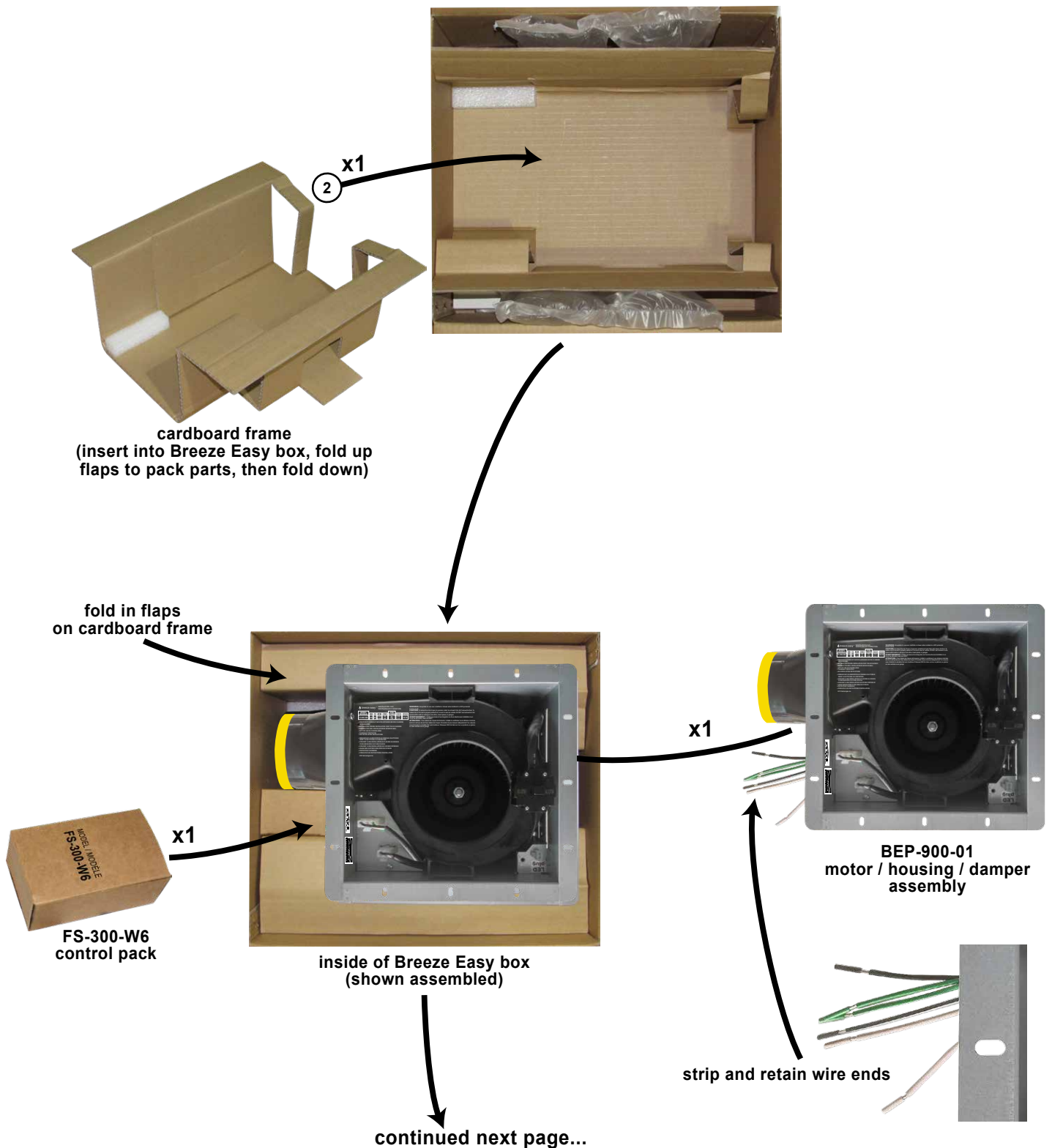
x2

FNP-700-WH-02
support strips

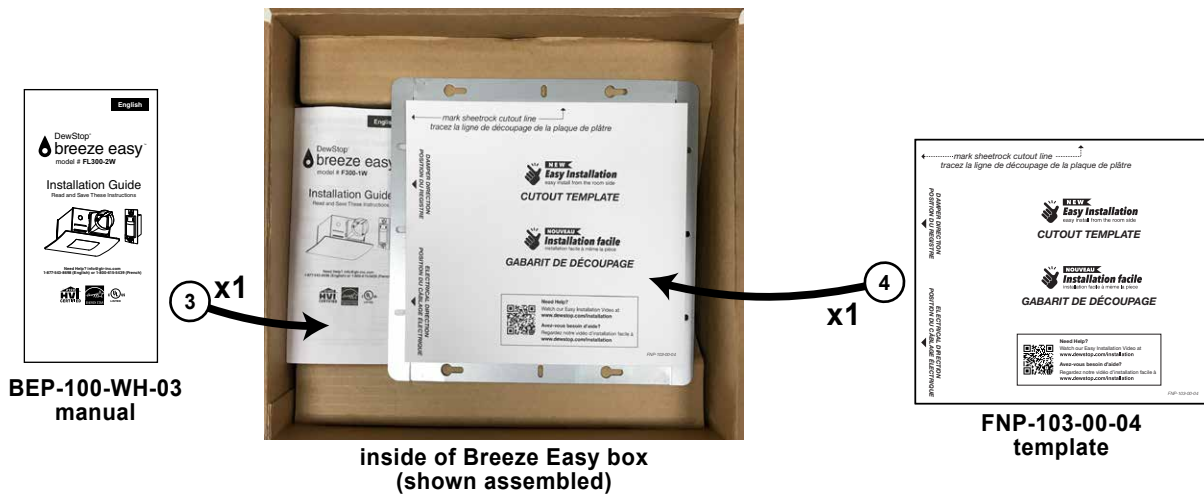
inside of
Breeze Easy box

continued next page...

FL300-2W

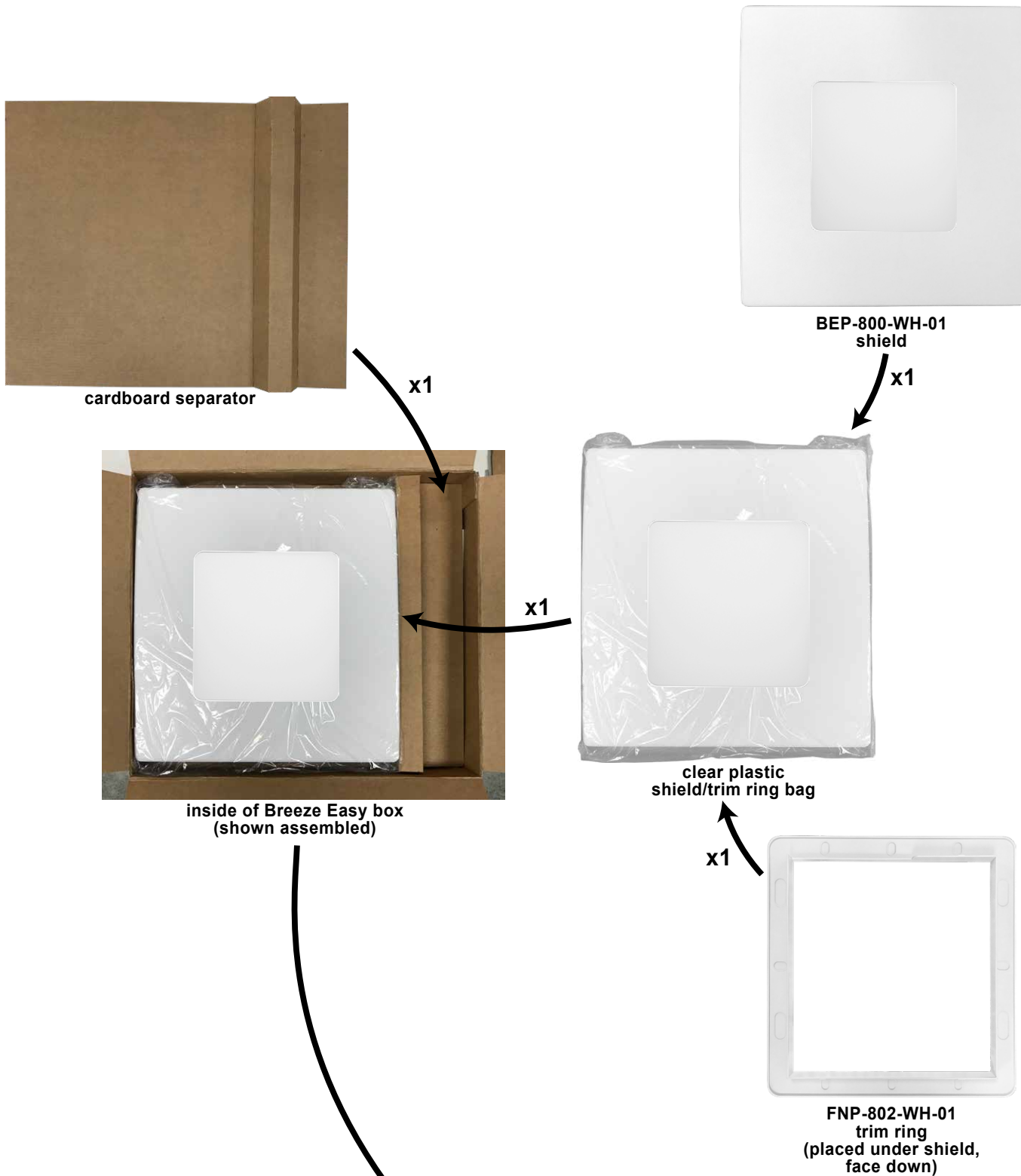


FL300-2W



continued next page...

FL300-2W



continued next page...

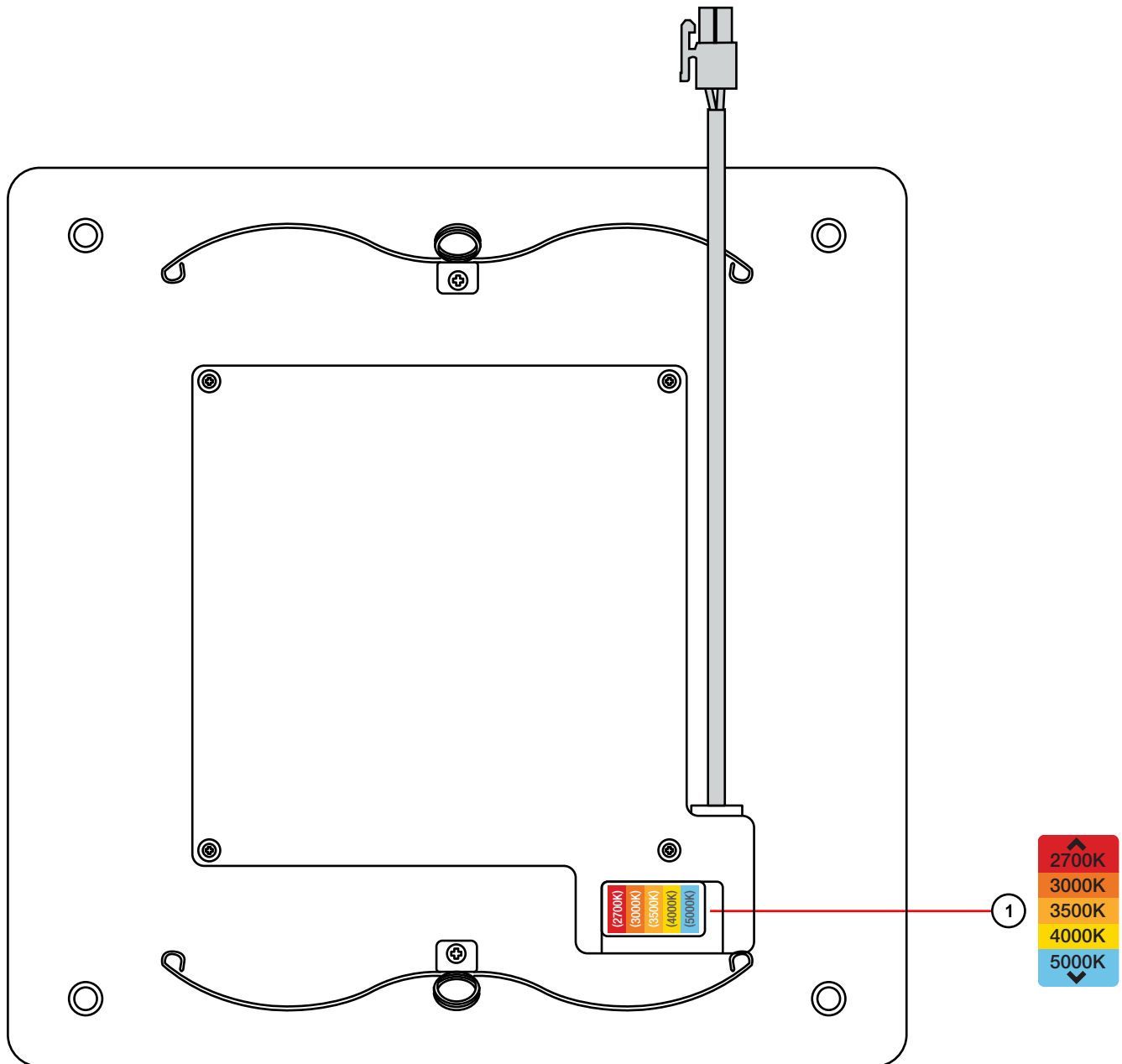
FL300-2W



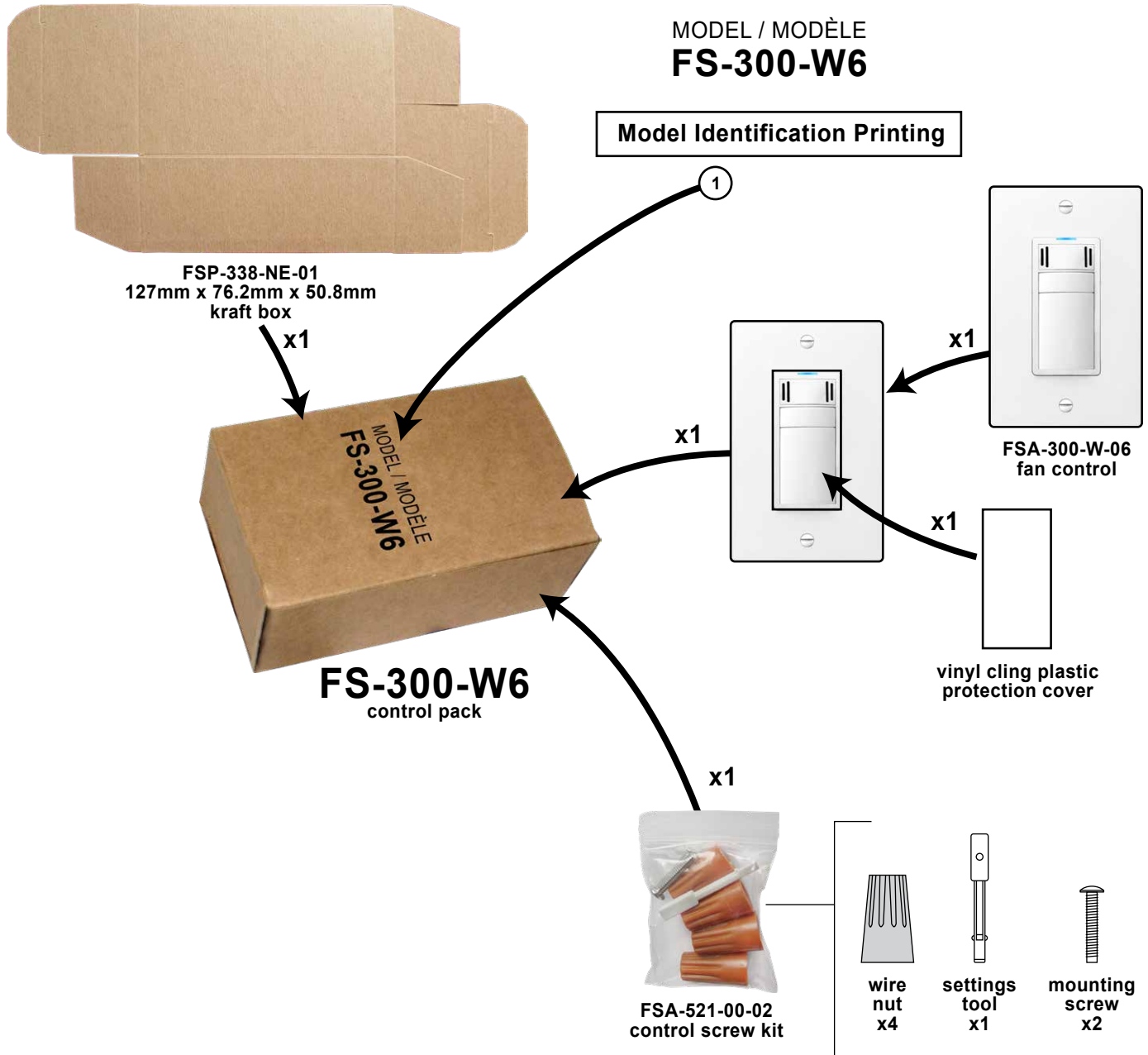
BEP-200-CL-05
Breeze Easy box
355.6 X 212.7 X 308 mm
(shown closed and sealed)

BEP-800-WH-01

Label Placement (back of shield)



FS-300-W6



FSA-300-W-06

MODEL
MODÈLE
FS-300
FAN: 3A MAX
VENTILATEUR
: 3A MAX

Model Identification Printing

1

15 30 45
5 60
SENSITIVITY
- +
TIMER / MINUTERIE SENSIBILITÉ

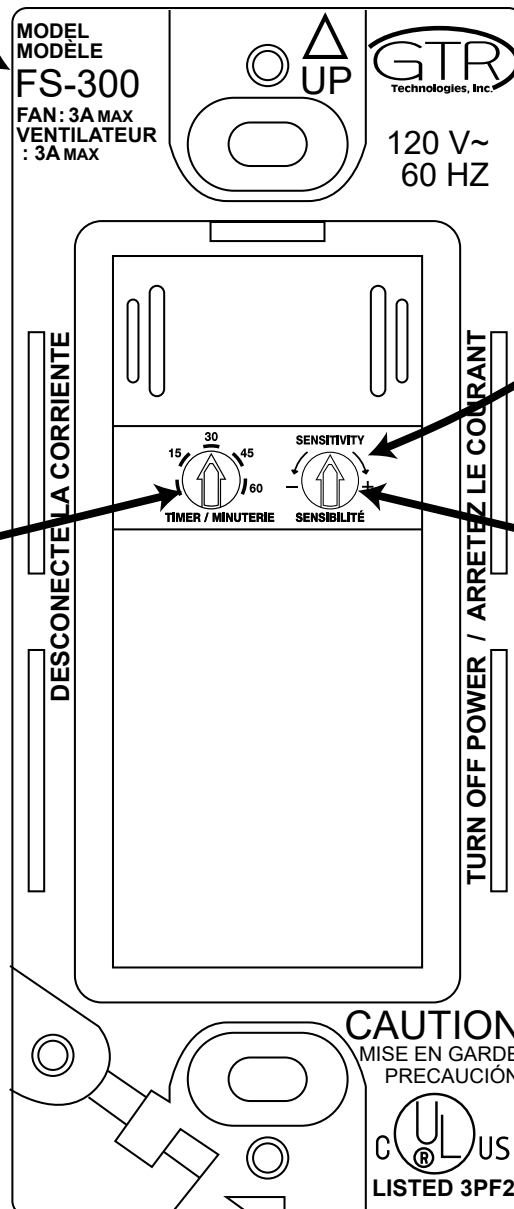
Settings Printing

2

15 30 45
5 60
↑

TIMER / MINUTERIE

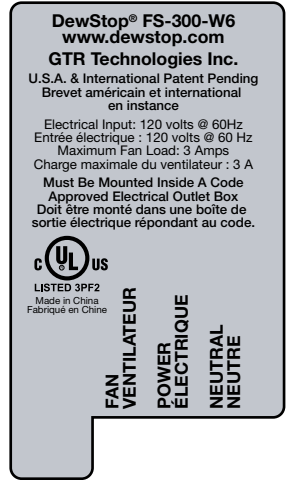
Set this dial to "30"



SENSITIVITY
- ↑ +
SENSIBILITÉ

Set this dial to twelve o'clock

FSA-300-W-06



x1

1 FSP-304-SI-03 on-product label

BEP-900-01

Label & Laser Printing Placement

Date Code (YY-MM)

breeze easy VENTILATION FAN
VENTILATEUR D'AÉRATION

MODEL MODÈLE	V	HZ	A	UL	W	CFM PI ³ /MIN	SONE	DATE
FL300-2W	120	60	0.33 0.36	34 40		80 110	0.5 1.0	18-10

WARNING: Acceptable for use over a bathtub or shower when installed in a GFCI protected branch circuit.
CAUTION: To reduce the risk of injury to persons, install fan at least 2.5m (8.2') above the floor. To reduce risk of fire and to properly exhaust air, be sure to duct air outside. DO NOT vent exhaust air into spaces within walls or ceilings or into attics, crawl spaces, or garages.
AVERTISSEMENT: Utilisez au-dessus d'une baignoire ou d'une douche avec installation à un circuit de dérivation relié à un DDF.
ATTENTION: Pour réduire les risques de blessures, installez le ventilateur à une distance minimale de 2.5 m (8.2 pi) du sol. Pour réduire les risques d'incendie et pour évacuer adéquatement l'air, assurez-vous d'orienter la conduite d'air vers l'extérieur. N'évacuez PAS l'air dans un mur, un plafond, un grenier, un vide sanitaire ou un garage.

- DISCONNECT POWER AT SERVICE ENTRANCE BEFORE CLEANING OR SERVICING
- SUITABLE FOR CEILING INSTALLATION OVER TUB OR SHOWER
- SUITABLE FOR WALL INSTALLATION IN INTERIOR WALL
- NOT FOR USE IN COOKING AREA
- THERMALLY PROTECTED
- SEE INSTALLATION INSTRUCTIONS
- DÉBRANCHEZ L'ALIMENTATION AU PANNEAU ÉLECTRIQUE AVANT LE NETTOYAGE OU L'ENTRETIEN
- CONVIENT À UNE INSTALLATION AU PLAFOND AU-DESSUS D'UNE BAIGNOIRE OU D'UNE DOUCHE
- CONVIENT À UNE INSTALLATION SUR UN MUR INTÉRIEUR
- USAGE NON DESTINÉ À UNE ZONE DE CUISSON
- PROTECTION THERMIQUE
- CONSULTEZ LES INSTRUCTIONS D'INSTALLATION

GTR Technologies Inc.

80 CFM
pi³/min

110 CFM
pi³/min



RVP-829-YL-01
4" damper cover

Fan power
fiche d'alimentation
du ventilateur

Light power
fiche d'alimentation
de l'éclairage

LED plug
brancher
la DEL



LED plug
brancher
la DEL

1: FL300-2W_labels_062723.ai	3: FL300-2W_CFM_laser_printing_062723.ai
2: FL300-2W_laser_printing_061923.ai	

BEP-900-01

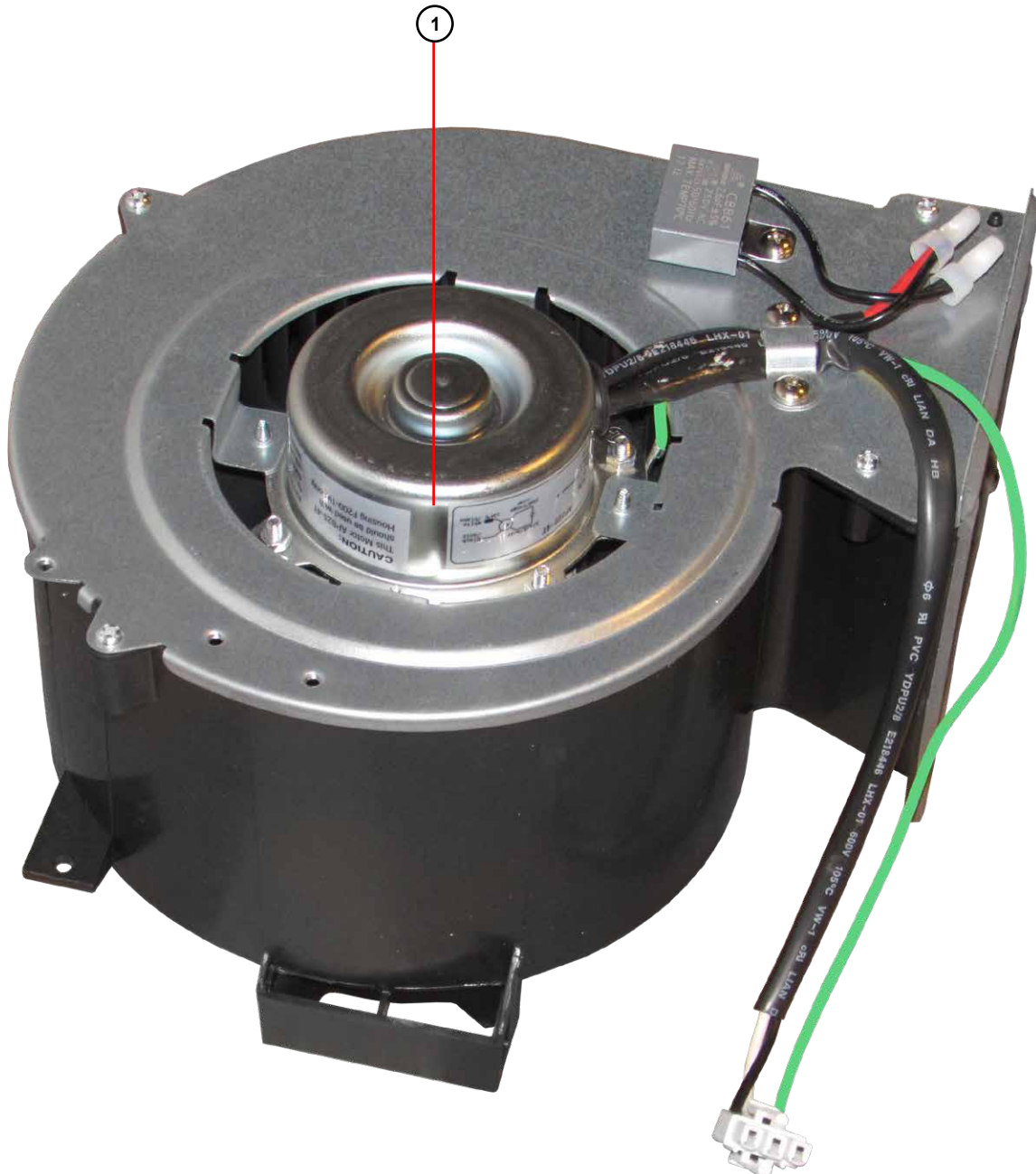
Label Placement (bottom of motor)

Date Code (YY-MM)

120 V 60 Hz	APB28-4TL	H black /noir
28 W 4P		L red /rouge
Insulation A / Isolant A		white /blanc
3.0uF/250 V		135°C
Date : 23-06		

CAUTION: This Motor APB28-4TL should be used with Housing FL300-2W only.

ATTENTION : Ce moteur APB28-4TL doit être utilisé uniquement avec le boîtier FL300-2W



REV LOG

DATE	MODEL/PART NO.	DISCRIPTION
6/21/2023	--	ORIGINAL BUILD
6/23/2023	BEP-200-CL-01	Updated box (changed lighting performance specs on top of box) (page 1)
	BEP-400-01	Changed wire nut qty from 3 to 4 (page 1)
	99-00029	Removed small desiccant bag (page 1)
	BEP-100-WH-01	Updated manual (changed LED brightness spec) (page 3)
	RVP-829-YL-01	Replaced damper warning label with 4" damper cover (page 10)
	BEP-900-01	Updated font on motor label (page 11)
6/27/2023	BEP-100-WH-01	Updated manual (changed fan housing drawing, changed R40 to R60) (page 3)
	BEP-900-01	Added laser printing to CFM switch, added "Fan power" and "Light power" labels, added French to "LED Plug" label (page 10)
7/11/2023	BEP-200-CL-02	Updated box (corrected spelling of "recyclable" on bottom of box) (page 1)
7/17/2023	BEP-200-CL-03	Updated box (barcode changed to 855448008978, switch photo changed to 1 button switch, lumens changed to 1000, - added to French phone#, French sones changed to 0,5) (page 1)
7/24/2023	BEP-200-CL-04	Updated box (changed adjustable colors illustration on side of box to show accurate plug) (page 1)
	--	Added 4" damper cover to photos of BEP-900-01 motor / housing / damper assembly (page 2)
	BEP-100-WH-02	Updated manual (changed select your light level illustration on page 8 to show accurate plug) (page 3)
	--	Updated illustration of back of shield to show accurate plug (page 6)
7/27/2023	BEP-200-CL-05	Updated box (corrected fan photo on fronts of box) (page 1)
	BEP-100-WH-03	Updated manual (corrected plug on the "Attach the shield" step illustration, changed "FAN" to "FAN AND LIGHT" in several places in the control sections) (page 3)