

# FL300-2W

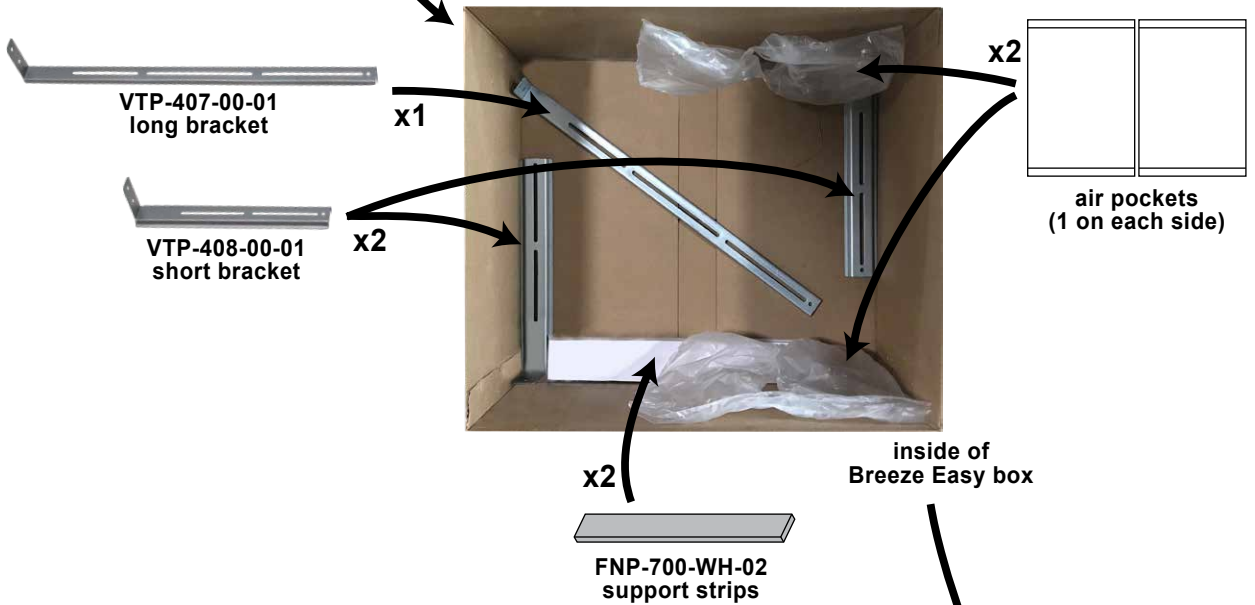
4-8-2024

## Build-To Sheet



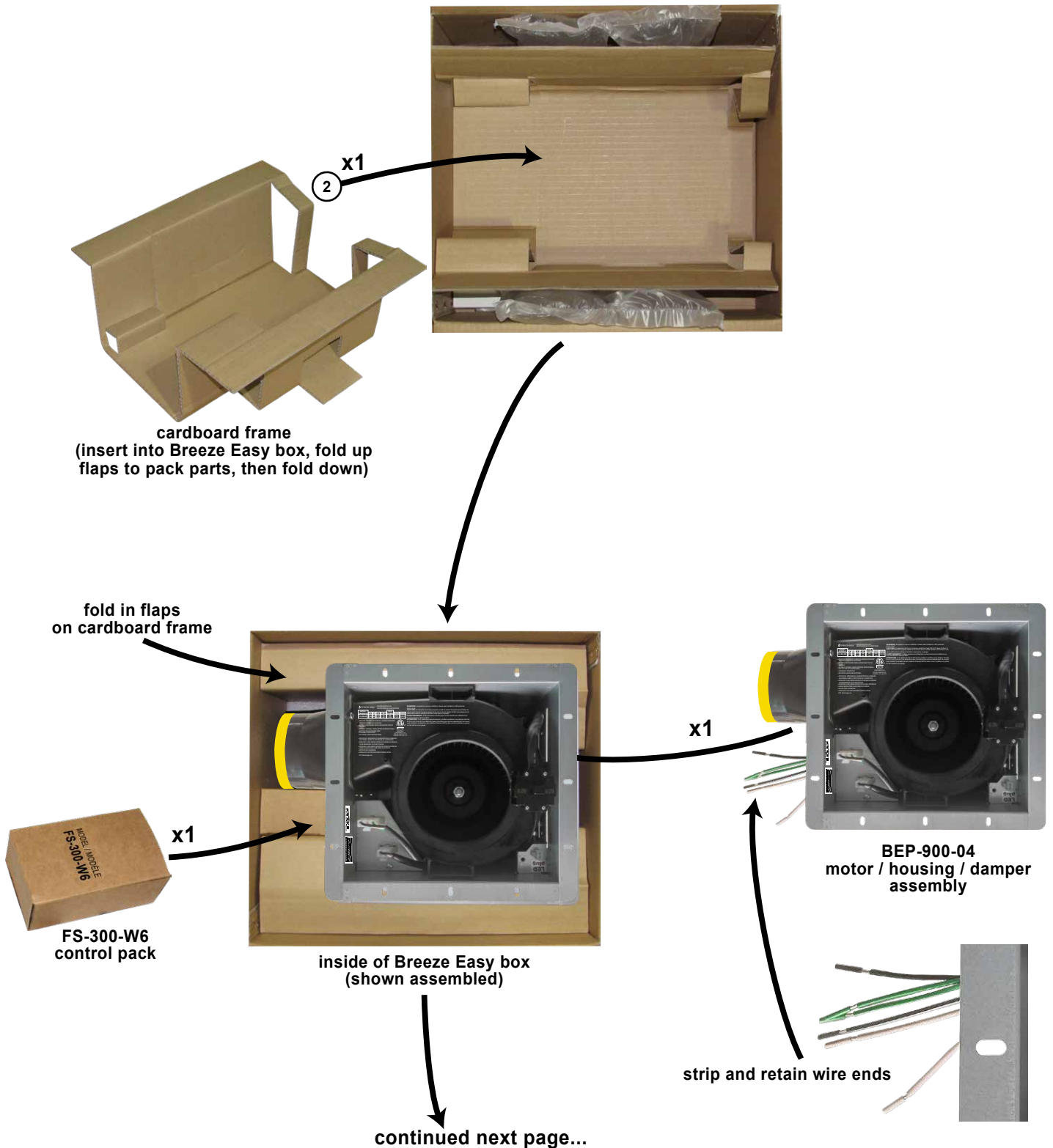
**BEP-200-CL-06**  
Breeze Easy box  
355.6 X 212.7 X 308 mm

① x1

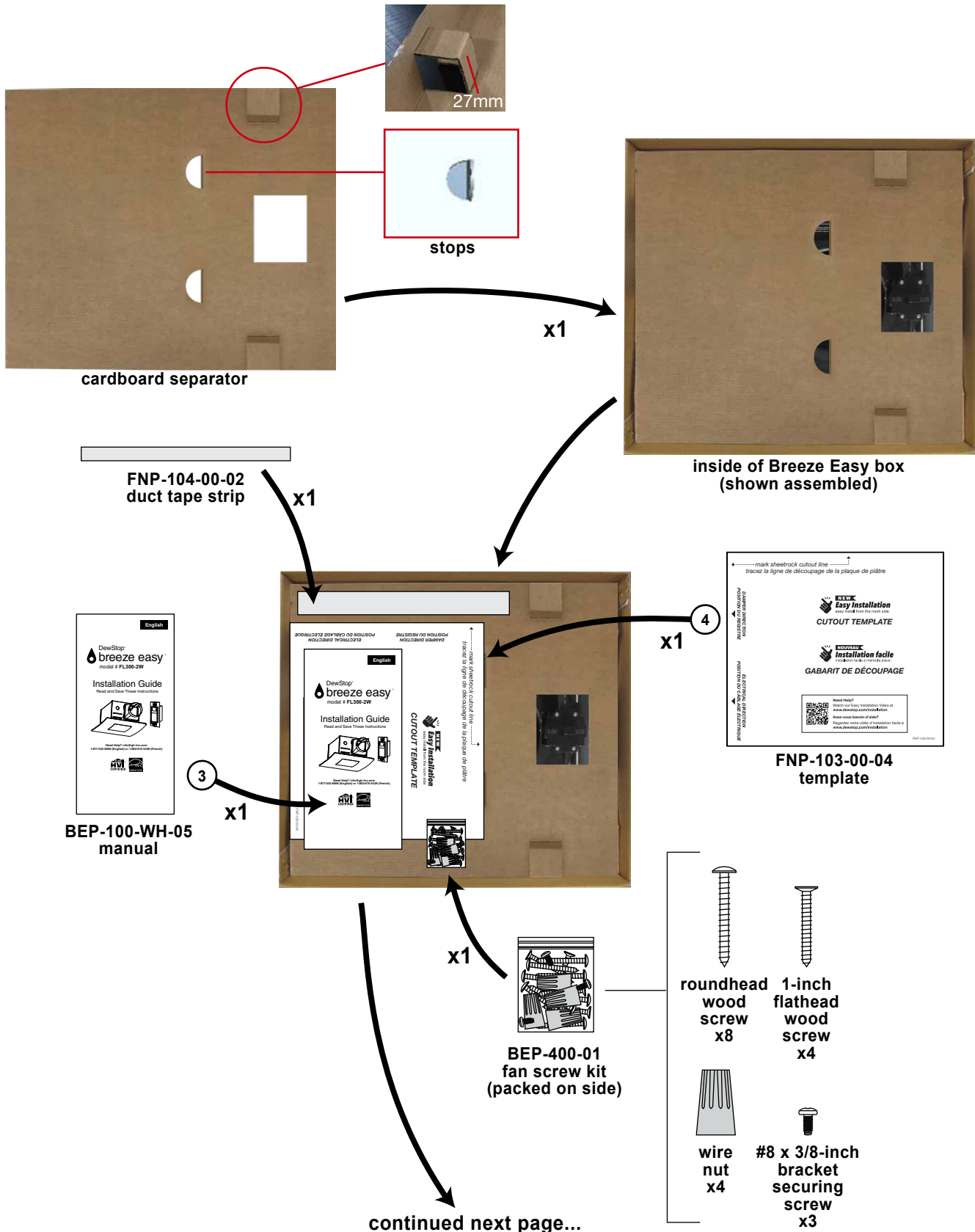


continued next page...

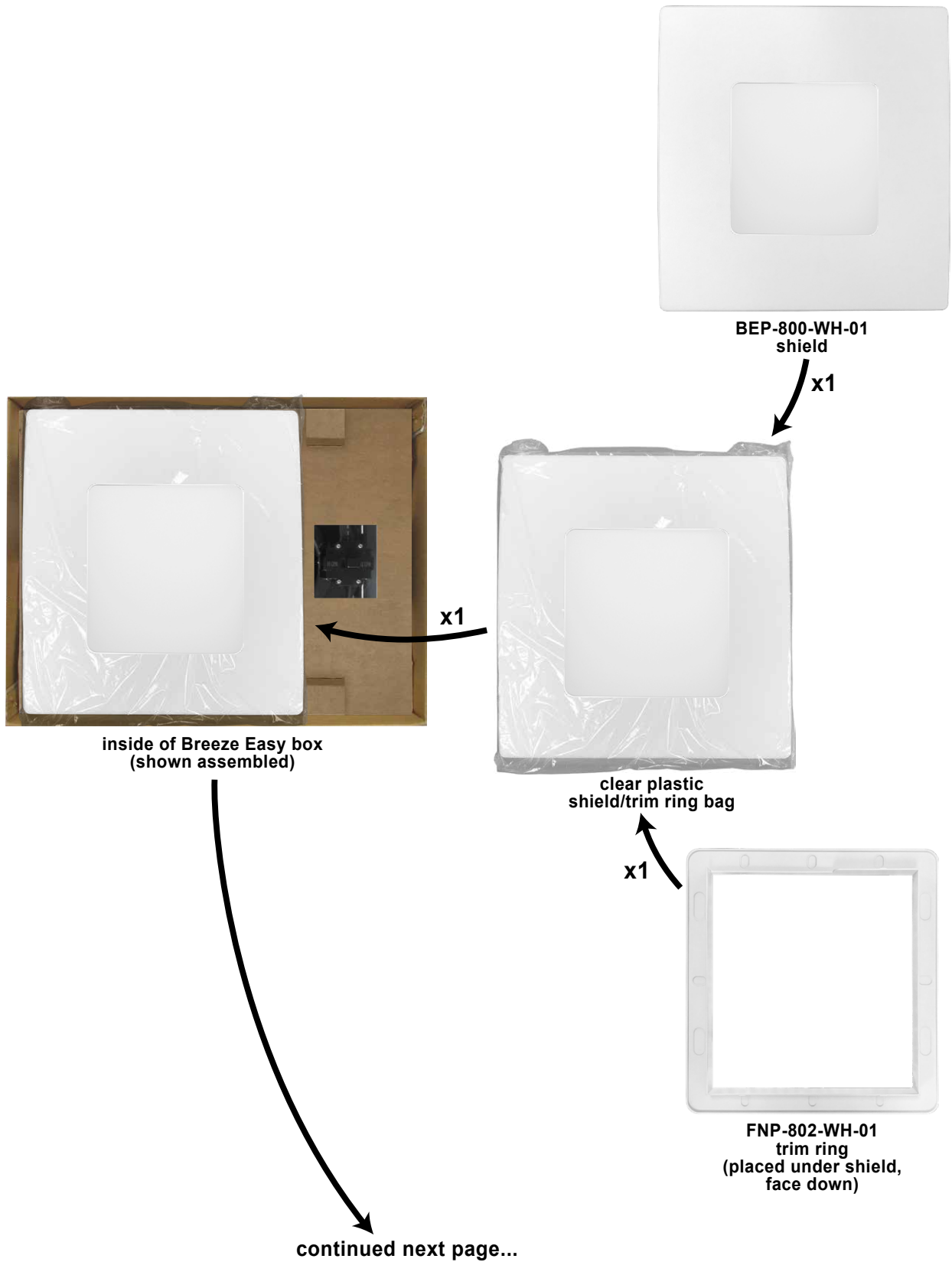
# FL300-2W



# FL300-2W



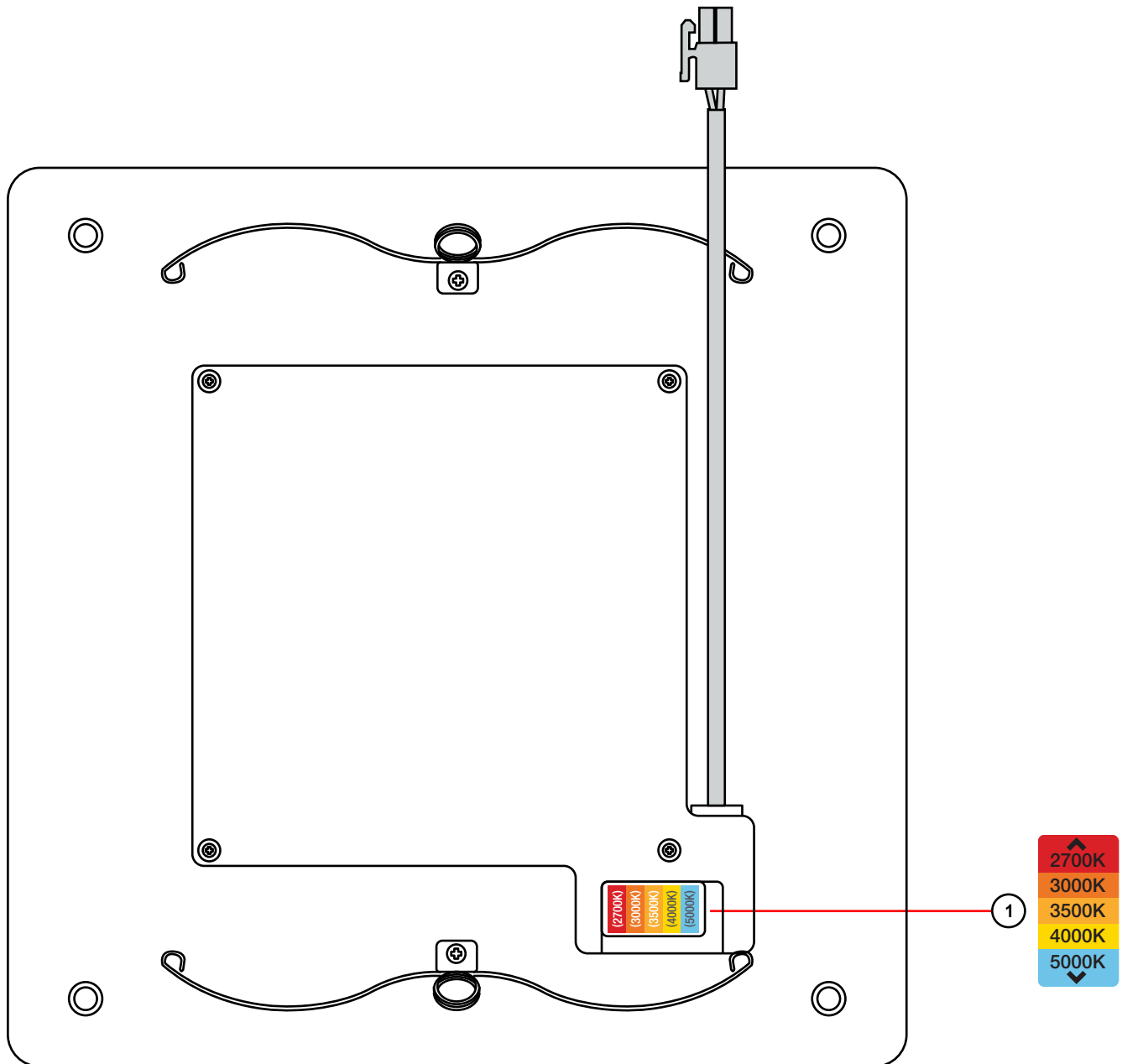
# FL300-2W



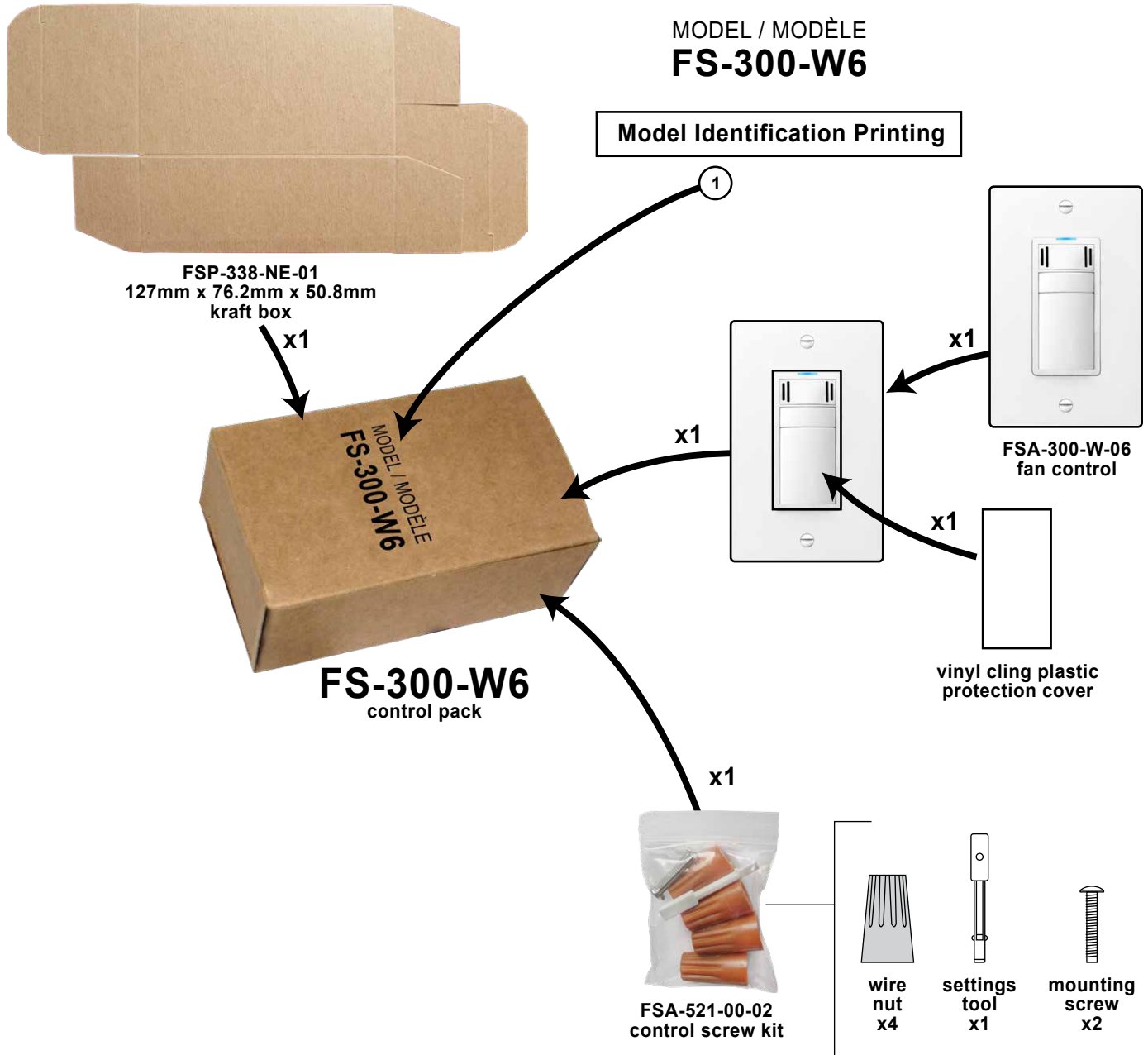


# BEP-800-WH-01

## Label Placement (back of shield)



# FS-300-W6



# FSA-300-W-06

MODEL  
MODELE  
FS-300  
FAN: 3A MAX  
VENTILATEUR  
: 3A MAX

Model Identification Printing

1

15 30 45  
5 60  
SENSITIVITY  
- +  
TIMER / MINUTERIE SENSIBILITÉ

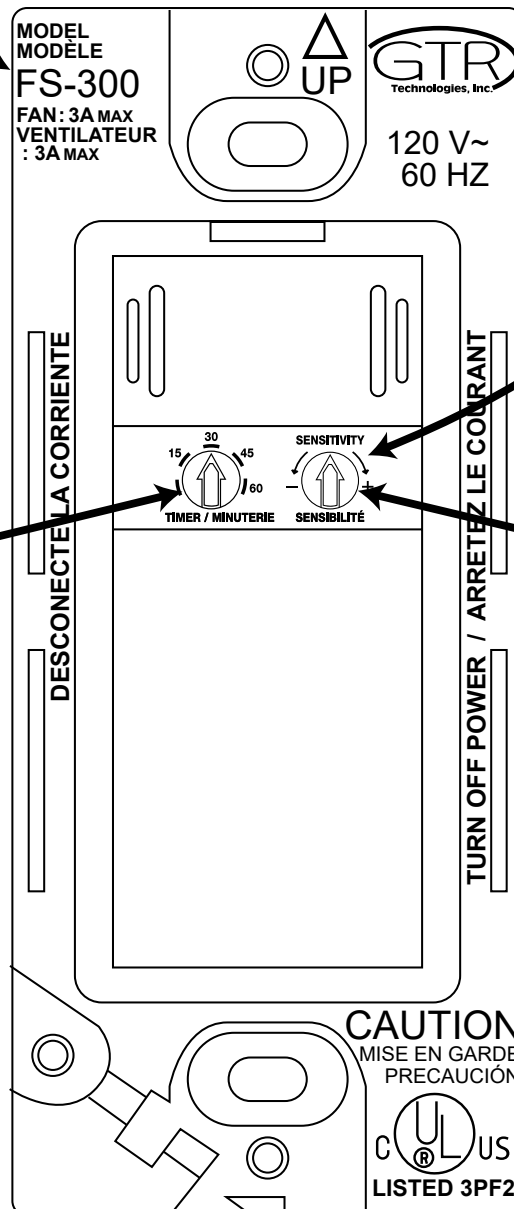
Settings Printing

2

15 30 45  
5 60

TIMER / MINUTERIE

Set this dial to "30"



SENSITIVITY  
- +  
SENSIBILITÉ

Set this dial to twelve o'clock



# FSA-300-W-06



x1

1 FSP-304-SI-03 on-product label

# BEP-900-04

## Label & Laser Printing Placement

CAN ICES-005(B)/NMB-005-(B)  
 This device complies with Part 15 of the FCC Rules. Operation is subject to the following two conditions  
 1. This device does not cause harmful interference, and  
 2. this device must accept any interference received, including interference that may cause undesired operation.  
 Ce dispositif est conforme à la partie 15 des règles de la FCC. Son fonctionnement est soumis aux deux conditions suivantes  
 1. L'appareil ne doit pas produire d'interférences, et  
 2. cet appareil doit accepter toute interférence reçue, y compris les interférences qui peuvent causer un fonctionnement indésirable

Date Code (YY-MM)

**breeze easy** VENTILATION FAN / VENTILATEUR D'AÉRATION

MODEL / MODELE	V	Hz	A	W	CFM / PI <sup>3</sup> /MIN	SONE	DATE
FL300-2W	120	60	0.53 / 0.38	24 / 40	80 / 110	0.5 / 1.0	18-10

**WARNING:** Acceptable for use over a bathtub or shower when installed in a GFCI protected branch circuit.  
**CAUTION:** To reduce the risk of injury to persons, install fan at least 2.5m (8.2') above the floor. To reduce risk of fire and to properly exhaust air, be sure to duct air outside. DO NOT vent exhaust air into spaces within walls or ceilings or into attics, crawl spaces, or garages.  
**AVERTISSEMENT:** Si utilisé au-dessus d'une baignoire ou d'une douche avec installation à un circuit de dérivation protégé à un GFCI.  
**ATTENTION:** Pour réduire les risques de blessures, installez le ventilateur à une distance minimale de 2.5 m (8.2 pi) du sol. Pour réduire les risques d'incendie et pour évacuer adéquatement l'air, assurez-vous d'orienter les conduites d'air vers l'extérieur. N'évacuez PAS l'air dans un mur, un plafond, un grenier, un vide sanitaire ou un garage.

**CAUTION:** DISCONNECT POWER AT SERVICE ENTRANCE BEFORE CLEANING OR SERVICING  
 • SUITABLE FOR CEILING INSTALLATION OVER TUB OR SHOWER  
 • SUITABLE FOR WALL INSTALLATION IN INTERIOR WALL  
 • NOT FOR USE IN COOKING AREA  
 • THERMALLY PROTECTED  
 • SEE INSTALLATION INSTRUCTIONS

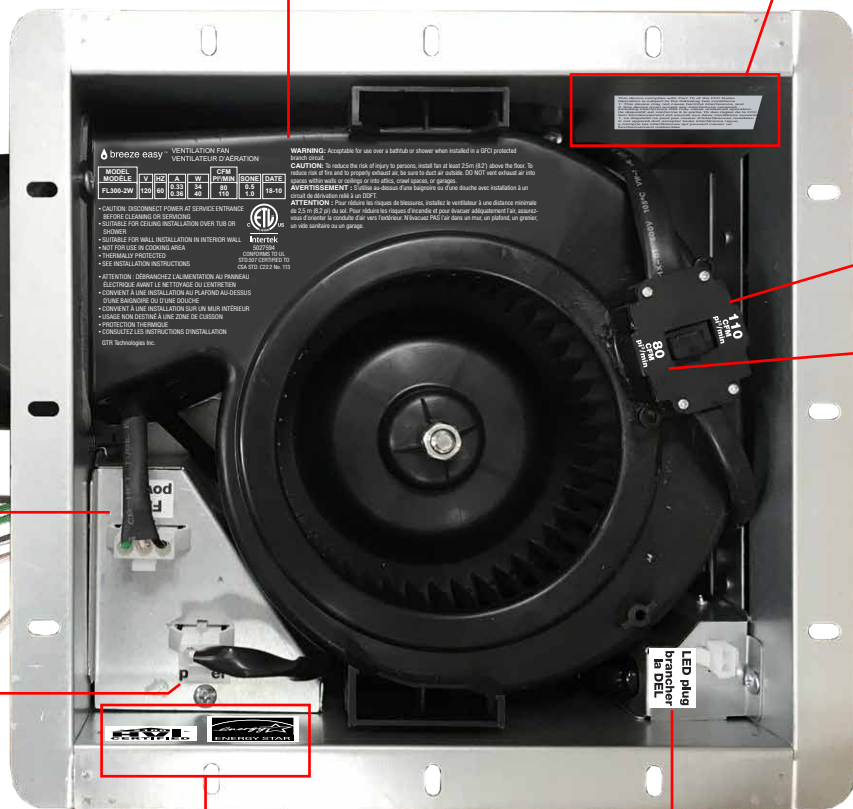
**ATTENTION:** DÉBRANCHEZ L'ALIMENTATION AU PANNEAU ÉLECTRIQUE AVANT LE NETTOYAGE OU L'ENTRETIEN  
 • CONVIENT À UNE INSTALLATION AU PLAFOND AU-DESSUS D'UNE BAINOIRE OU D'UNE DOUCHE  
 • CONVIENT À UNE INSTALLATION SUR UN MUR INTÉRIEUR  
 • USAGE NON DESTINÉ À UNE ZONE DE CUISSON  
 • PROTECTION THERMIQUE  
 • CONSULTEZ LES INSTRUCTIONS D'INSTALLATION

GTR Technologies Inc.

Intertek  
 5022594  
 CONFORMS TO UL  
 STD 507 CERTIFIED TO  
 CSA STD. C22.2 No. 113



RVP-829-YL-01  
 4" damper cover



110  
 CFM  
 pi<sup>3</sup>/min

80  
 CFM  
 pi<sup>3</sup>/min

Fan power  
 fiche  
 d'alimentation  
 du ventilateur

Light power  
 fiche  
 d'alimentation  
 de l'éclairage

LED plug  
 brancher  
 la DEL



1: FL300-2W_labels_062723.ai	3: FL300-2W_ETL_FCC_label_101023.ai
2: FL300-2W_ETL_laser_printing_090523.ai	4: FL300-2W_CFM_laser_printing_062723.ai

# BEP-900-04

## Label Placement (bottom of motor)

Date Code (YY-MM)

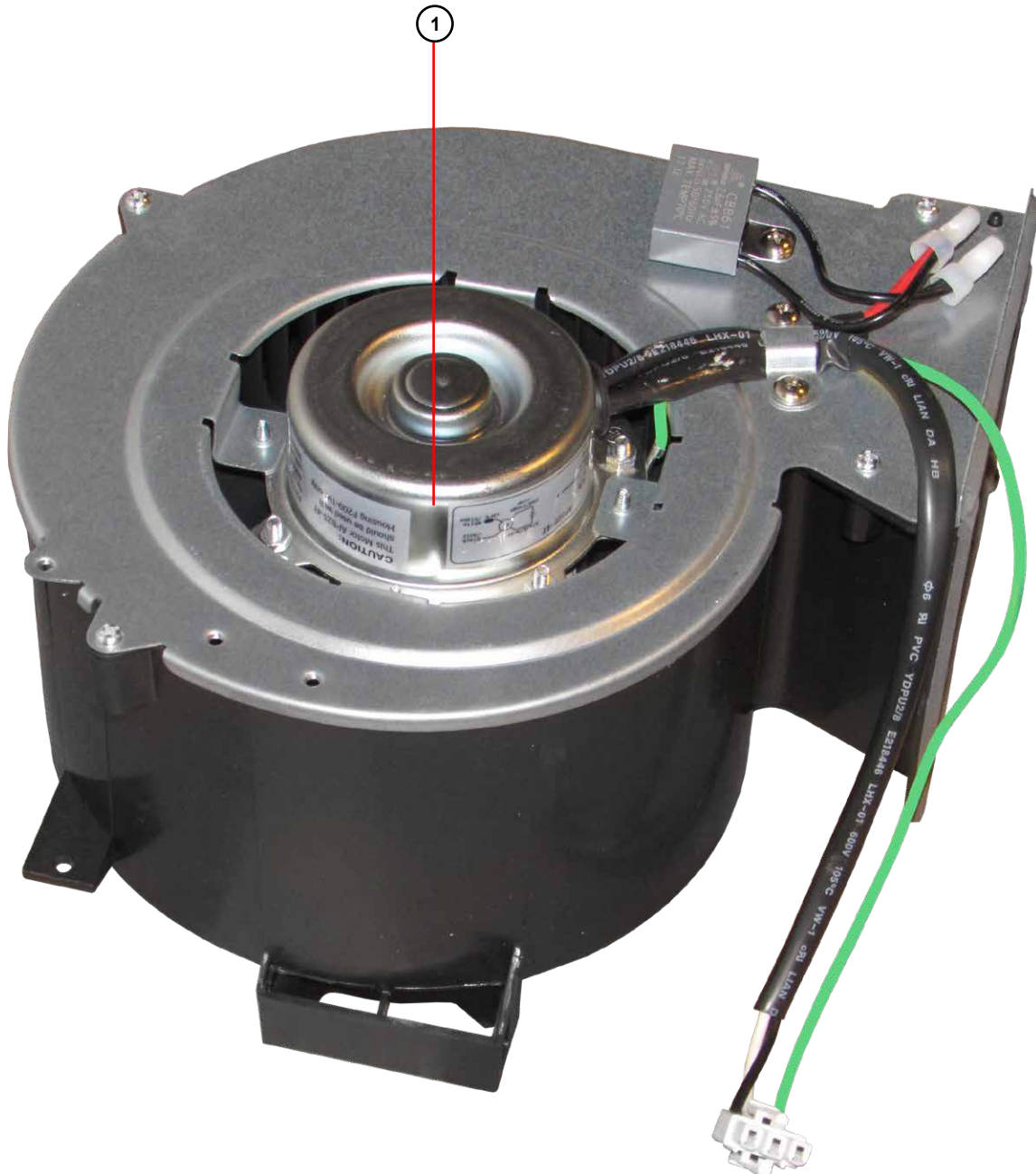
120 V	60 Hz
28 W	4P
Insulation A / Isolant A	
3.0uF/250 V	
Date : 23-06	

APB28-4TL

H black /noir  
L red /rouge  
white /blanc  
135°C

**CAUTION:** This Motor APB28-4TL should be used with Housing FL300-2W only.

**ATTENTION :** Ce moteur APB28-4TL doit être utilisé uniquement avec le boîtier FL300-2W



# REV LOG

DATE	MODEL/PART NO.	DISCRIPTION
6/21/2023	--	ORIGINAL BUILD
6/23/2023	BEP-200-CL-01	Updated box (changed lighting performance specs on top of box) (page 1)
	BEP-400-01	Changed wire nut qty from 3 to 4 (page 1)
	99-00029	Removed small desiccant bag (page 1)
	BEP-100-WH-01	Updated manual (changed LED brightness spec) (page 3)
	RVP-829-YL-01	Replaced damper warning label with 4" damper cover (page 10)
	BEP-900-01	Updated font on motor label (page 11)
6/27/2023	BEP-100-WH-01	Updated manual (changed fan housing drawing, changed R40 to R60) (page 3)
	BEP-900-01	Added laser printing to CFM switch, added "Fan power" and "Light power" labels, added French to "LED Plug" label (page 10)
7/11/2023	BEP-200-CL-02	Updated box (corrected spelling of "recyclable" on bottom of box) (page 1)
7/17/2023	BEP-200-CL-03	Updated box (barcode changed to 855448008978, switch photo changed to 1 button switch, lumens changed to 1000, - added to French phone#, French sones changed to 0,5) (page 1)
7/24/2023	BEP-200-CL-04	Updated box (changed adjustable colors illustration on side of box to show accurate plug) (page 1)
	--	Added 4" damper cover to photos of BEP-900-01 motor / housing / damper assembly (page 2)
	BEP-100-WH-02	Updated manual (changed select your light level illustration on page 8 to show accurate plug) (page 3)
	--	Updated illustration of back of shield to show accurate plug (page 6)
7/27/2023	BEP-200-CL-05	Updated box (corrected fan photo on fronts of box) (page 1)
	BEP-100-WH-03	Updated manual (corrected plug on the "Attach the shield" step illustration, changed "FAN" to "FAN AND LIGHT" in several places in the control sections) (page 3)
8/29/2023	BEP-200-CL-06	Updated box (replaced UL mark with ETL mark) (page 1)
	BEP-100-WH-04	Updated manual (removed UL mark from Eng and French covers) (page 3)
	BEP-900-02	Updated laser printing (added ETL mark, changed "UL W" to "W") (page 10)
	BEP-900-02	Removed UL certification label (page 10)
9/5/2023	BEP-900-03	Updated laser printing (added ETL # and text below ETL logo, added "CAUTION:" to the front of the first bullet point [Eng/Fr] ) (page 10)
9/25/2023	FL300-2W	Updated cardboard separator (added stops and side folds-ins), moved manual and template to above cardboard separator/below shield, added opening for CFM switch (pages 3-4)
9/27/2023	FL300-2W	Updated cardboard separator (rotated stops 180°) (page 3)
10/11/2023	BEP-200-CL-06	Updated box (added FCC info, updated patent info, added Costco # above barcode) (page 1)
	BEP-100-WH-05	Updated manual (added FCC info, updated patent info) (page 3)
	BEP-900-04	Added FCC label to motor / housing / damper assembly (page 10)
10/13/2023	FL300-2W	Moved duct tape strip (FNP-104-00-02) and fan screw kit (BEP-400-01) to on top of cardboard separator (page 3)
4/8/2024	FL300-2W	Updated cardboard frame (removed foam, added fold in frame to replace it) (page 2)