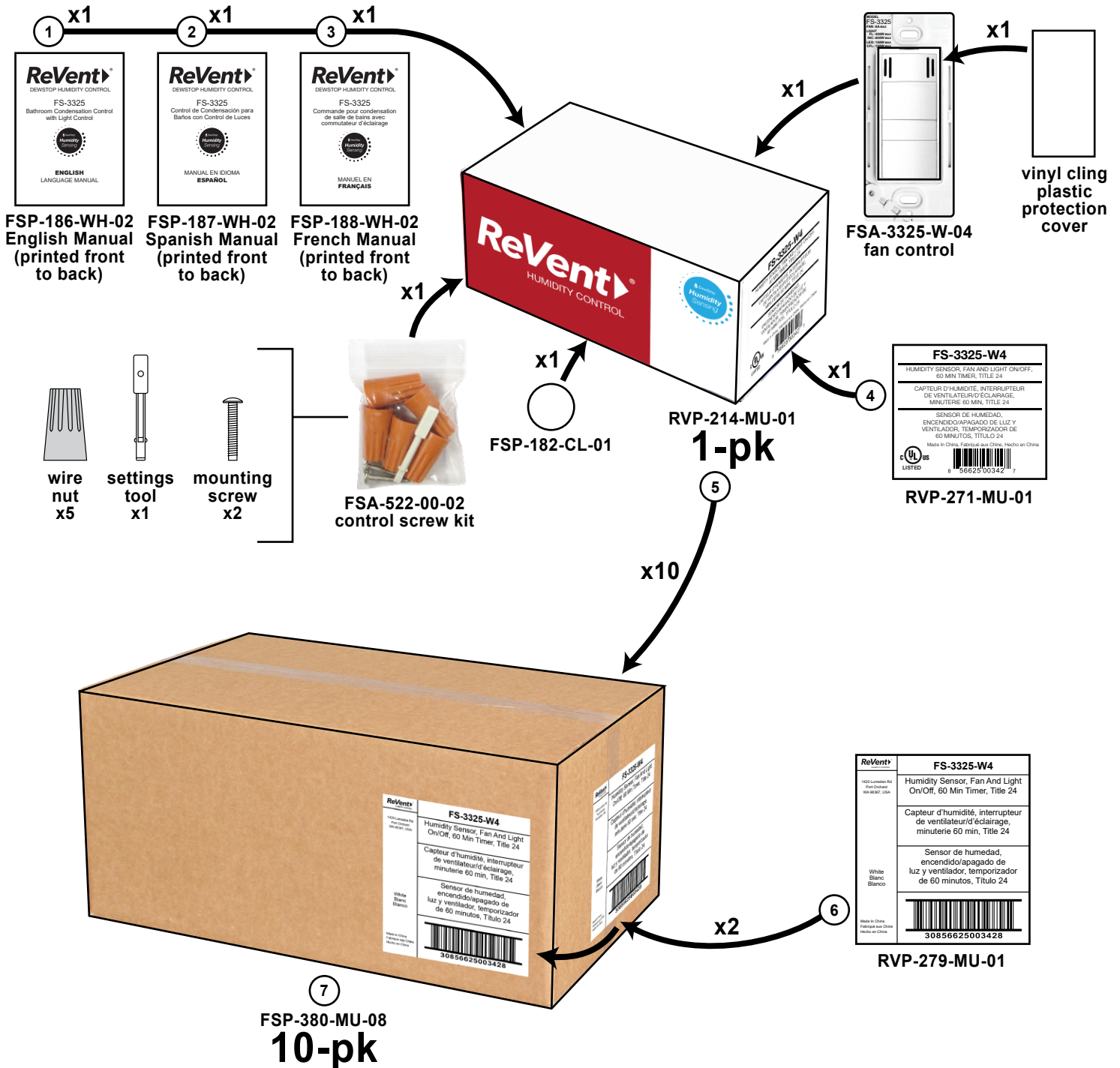


# FS-3325-W4

rev:7-26-2021



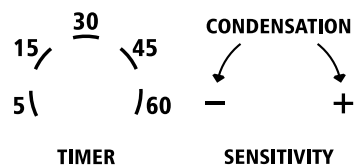
1: Manual_FS-3325_English_011121.ai	4: 1pk-box-label_FS-3325-W4_011121.ai	6: 10pk-box-label_FS-3325-W4_011121.ai
2: Manual_FS-3325_Spanish_011121.ai	5: ReVent_HUMIDITY-CONTROL_1-Pack_111320.ai	7: FSP-380-MU-08_060316.ai
3: Manual_FS-3325_French_011121.ai		

# FSA-3325-W-04

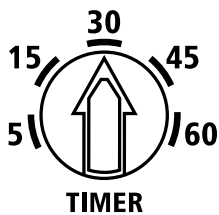
MODEL  
FS-3325  
FAN: 6A MAX  
LIGHT  
FL: 400W MAX  
INC: 600W MAX  
LED: 150W MAX  
CFL: 150W MAX

Model Identification Printing

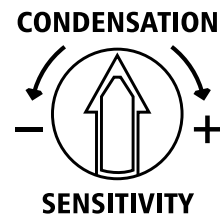
MODEL  
FS-3325  
FAN: 6A MAX  
LIGHT  
FL: 400W MAX  
INC: 600W MAX  
LED: 150W MAX  
CFL: 150W MAX



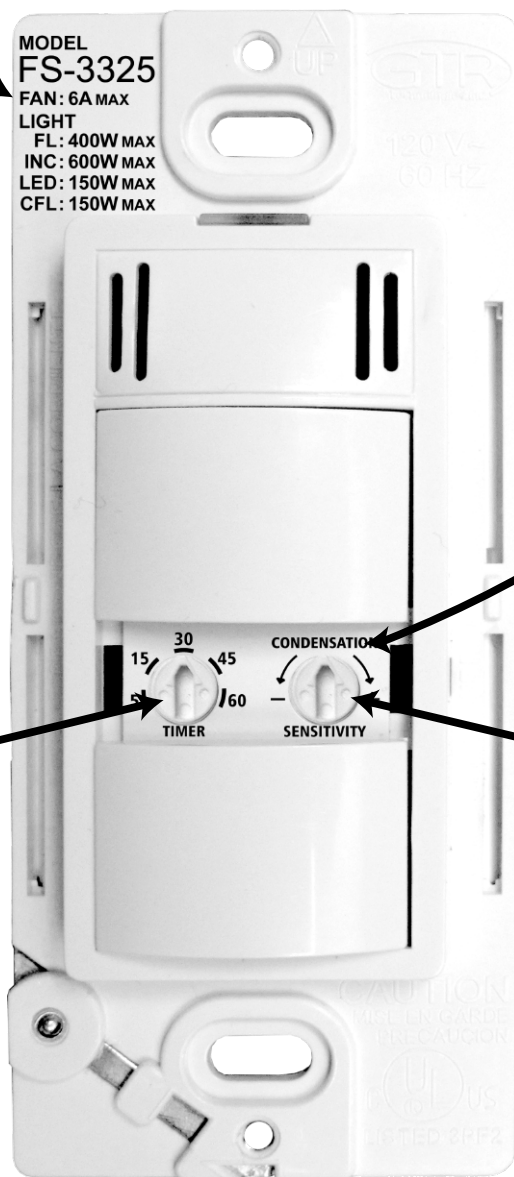
Settings Printing



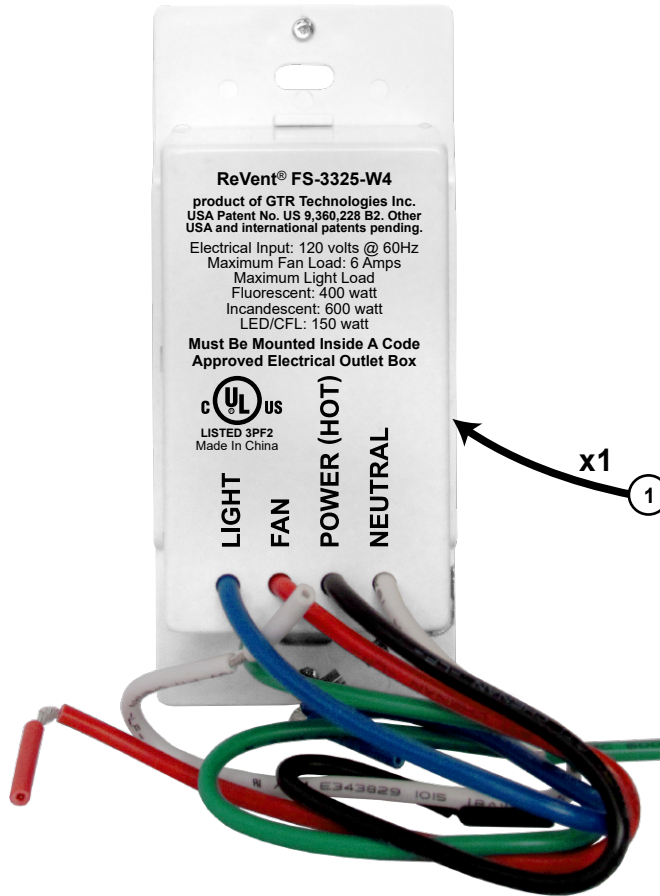
Set this dial to "30"



Set this dial to  
the center of  
"CONDENSATION"



# FSA-3325-W-04



**ReVent® FS-3325-W4**  
product of GTR Technologies Inc.  
USA Patent No. US 9,360,228 B2. Other  
USA and International patents pending.  
Electrical Input: 120 volts @ 60Hz  
Maximum Fan Load: 6 Amps  
Maximum Light Load  
Fluorescent: 400 watt  
Incandescent: 600 watt  
LED/CFL: 150 watt  
**Must Be Mounted Inside A Code  
Approved Electrical Outlet Box**



LISTED 3PF2  
Made In China

LIGHT  
FAN  
POWER (HOT)  
NEUTRAL

**ReVent® FS-3325-W4**  
product of GTR Technologies Inc.  
USA Patent No. US 9,360,228 B2. Other  
USA and international patents pending.  
Electrical Input: 120 volts @ 60Hz  
Maximum Fan Load: 6 Amps  
Maximum Light Load  
Fluorescent: 400 watt  
Incandescent: 600 watt  
LED/CFL: 150 watt  
**Must Be Mounted Inside A Code  
Approved Electrical Outlet Box**



LISTED 3PF2  
Made In China

LIGHT  
FAN  
POWER (HOT)  
NEUTRAL

x1

1

---

# REV LOG

---

REV DATE	MODEL/PART NO.	DISCRIPTION
1/11/2021	--	Original build
7/26/2021	FSA-3325-W4	Switched on-product label to laser printing (page 3)