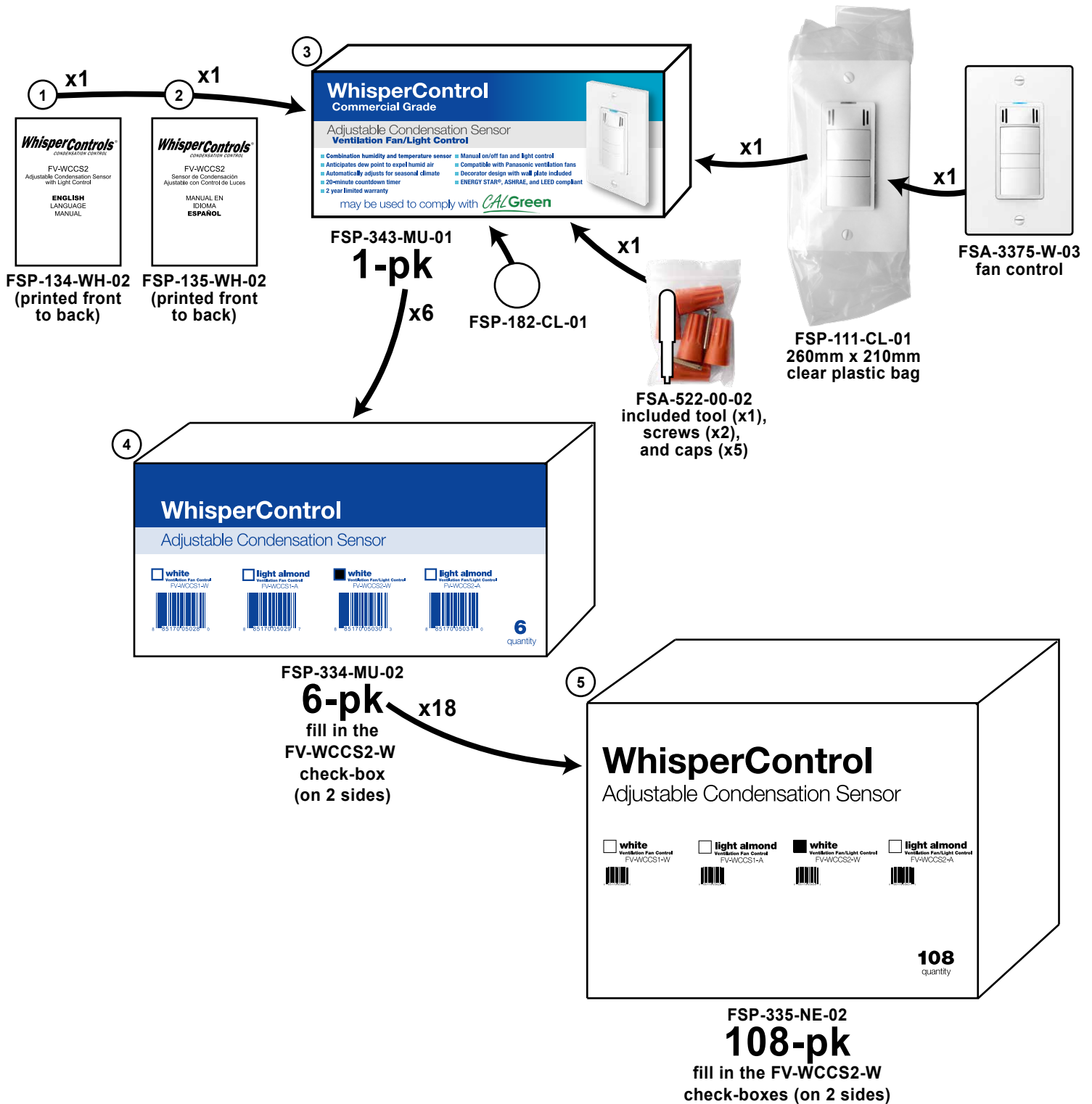


FS-3375-W3

7-7-2023



1: Panasonic_manual_FS-3375_English_070523.ai	4: Panasonic_box_6-pack_FS-3350-3375_050114.ai
2: Panasonic_manual_FS-3375_Spanish_070523.ai	5: Panasonic_box_108-pack_FS-3350-3375_050114.ai
3: Panasonic_box_1-pack_FS-3375-W3_050114.ai	

FS-3375-W3

Packing Steps:

- 1.) put a FSA-522-00-02 included tool, caps, and screws pack, a FSP-134-WH-02 English manual, and a FSP-135-WH-02 Spanish manual into a FSP-343-MU-01 1-pk box



- 2.) put a FSA-3375-W-03 fan control into a FSP-111-CL-01 260mm x 210mm clear plastic bag, fold to close, then place the bagged fan switch in the 1-pk box face up



- 3.) seal 1-pk box with a FSP-182-CL-01 round sealing label

may be used to comply with 



FSA-3375-W-03

MODEL 3375
FV-WCCS2
FAN: 8A MAX
LIGHT
FL: 400W MAX
INC: 600W MAX
LED: 150W MAX
CFL: 150W MAX

Model Identification Printing

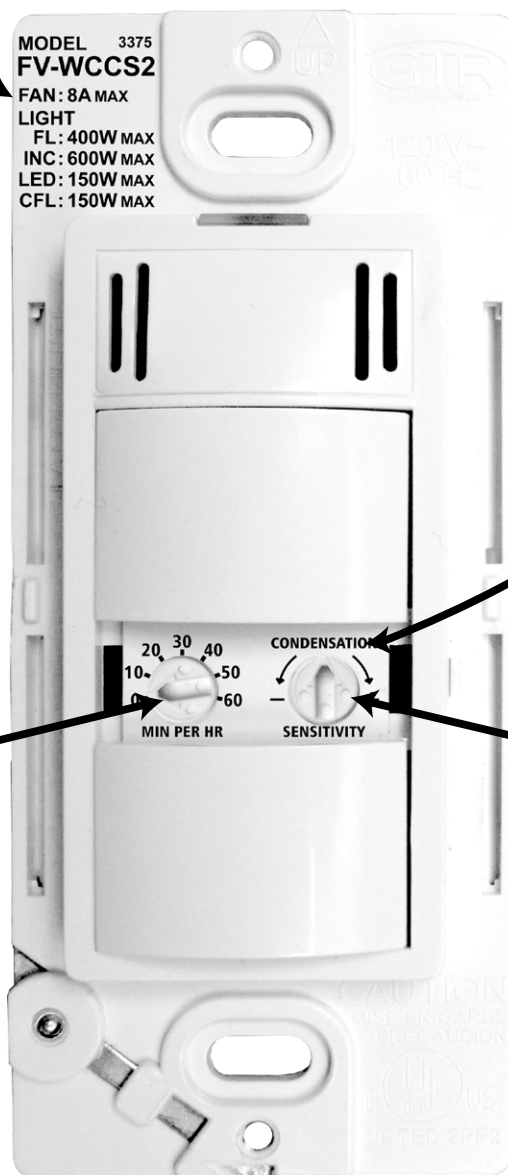
MODEL 3375
FV-WCCS2
FAN: 8A MAX
LIGHT
FL: 400W MAX
INC: 600W MAX
LED: 150W MAX
CFL: 150W MAX

20 30 40 CONDENSATION
10 50
0 -60 - +
MIN PER HR SENSITIVITY

Settings Printing

20 30 40
10 50
0 60
MIN PER HR

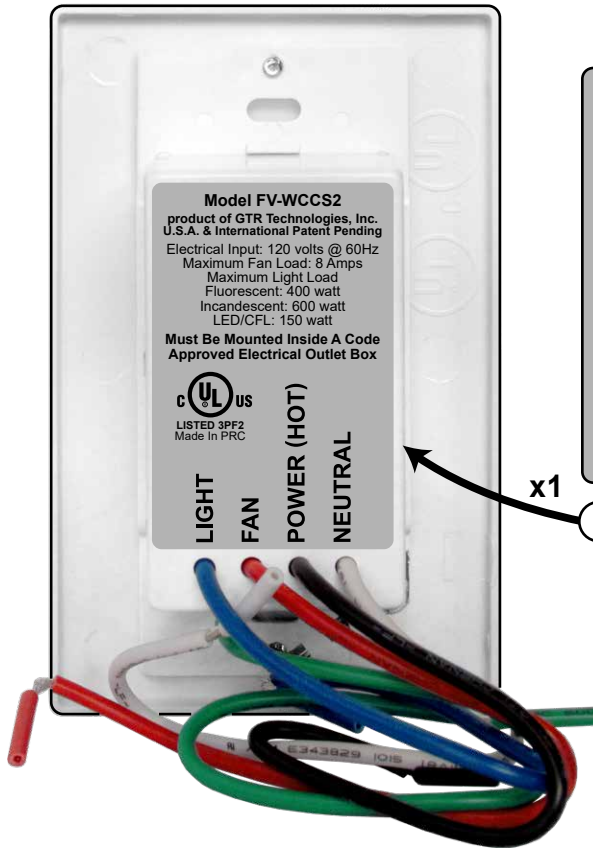
Set this dial to "0"



CONDENSATION
- +
SENSITIVITY


Set this dial to
the center of
"CONDENSATION"

FSA-3375-W-03



Model FV-WCCS2
product of GTR Technologies, Inc.
U.S.A. & International Patent Pending
Electrical Input: 120 volts @ 60Hz
Maximum Fan Load: 8 Amps
Maximum Light Load
Fluorescent: 400 watt
Incandescent: 600 watt
LED/CFL: 150 watt

**Must Be Mounted Inside A Code
Approved Electrical Outlet Box**

 **US**
LISTED 3PF2
Made In PRC

LIGHT
FAN
POWER (HOT)
NEUTRAL

1 FSP-220-SI-01
Panasonic
on-product label

REV LOG

REV DATE	MODEL/PART NO.	DISCRIPTION
12/4/2013	--	Original build
7/7/2023	RSP-132-WH-02	Updated manual (changed Go To Research to GTR, updated company info below warranty) (page 1)
	RSP-133-WH-02	Updated manual (changed Go To Research to GTR, updated company info below warranty) (page 1)