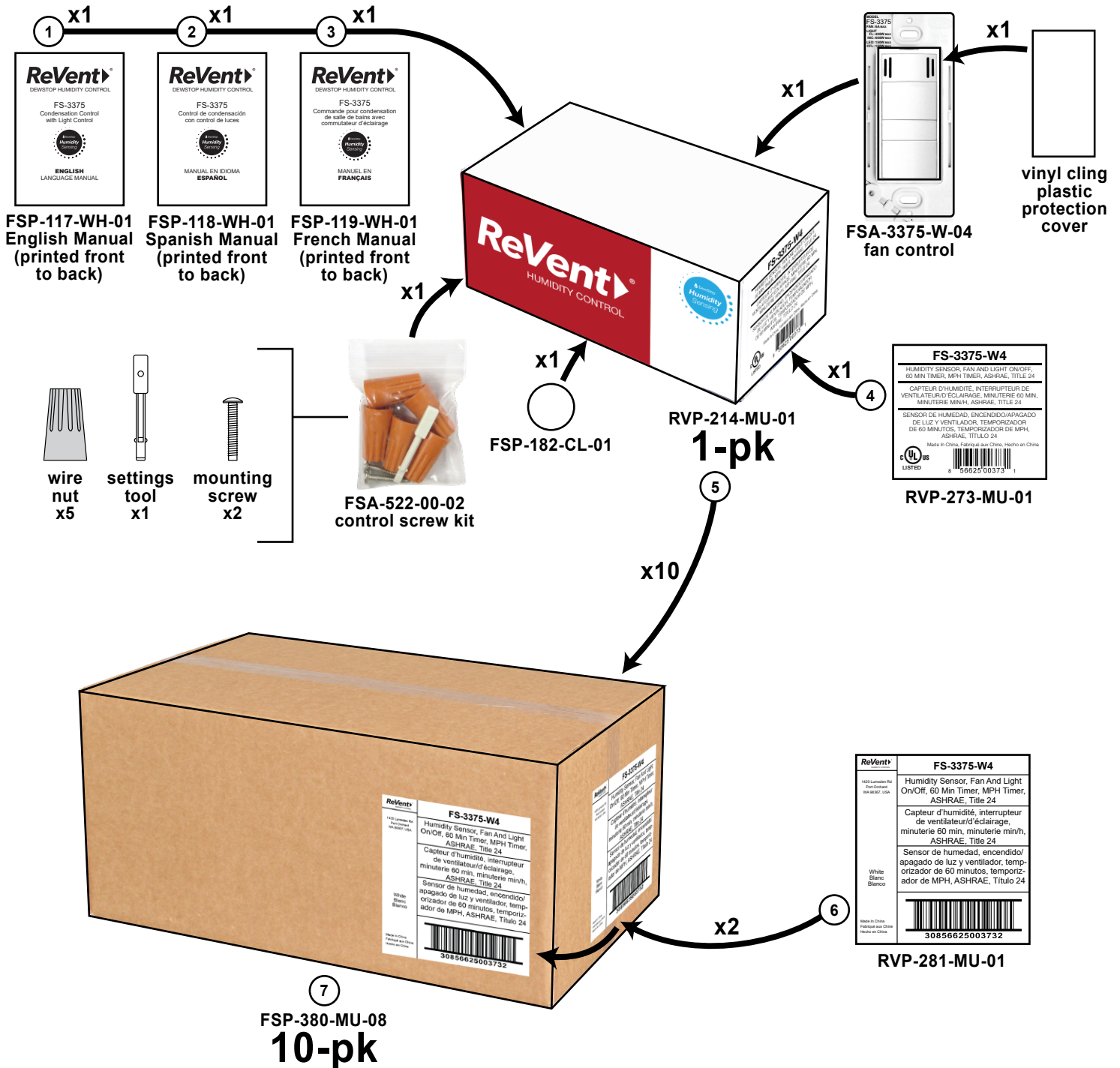


FS-3375-W4

rev:7-26-2021



1: Manual_FS-3375_English_021121.ai	4: 1pk-box-label_FS-3375-W4_020221.ai	6: 10pk-box-label_FS-3375-W4_020221.ai
2: Manual_FS-3375_Spanish_021121.ai	5: ReVent_HUMIDITY-CONTROL_1-Pack_111320.ai	7: FSP-380-MU-08_060316.ai
3: Manual_FS-3375_French_021121.ai		

FSA-3375-W-04

MODEL
FS-3375
FAN: 6A MAX
LIGHT
FL: 400W MAX
INC: 600W MAX
LED: 150W MAX
CFL: 150W MAX

Model Identification Printing

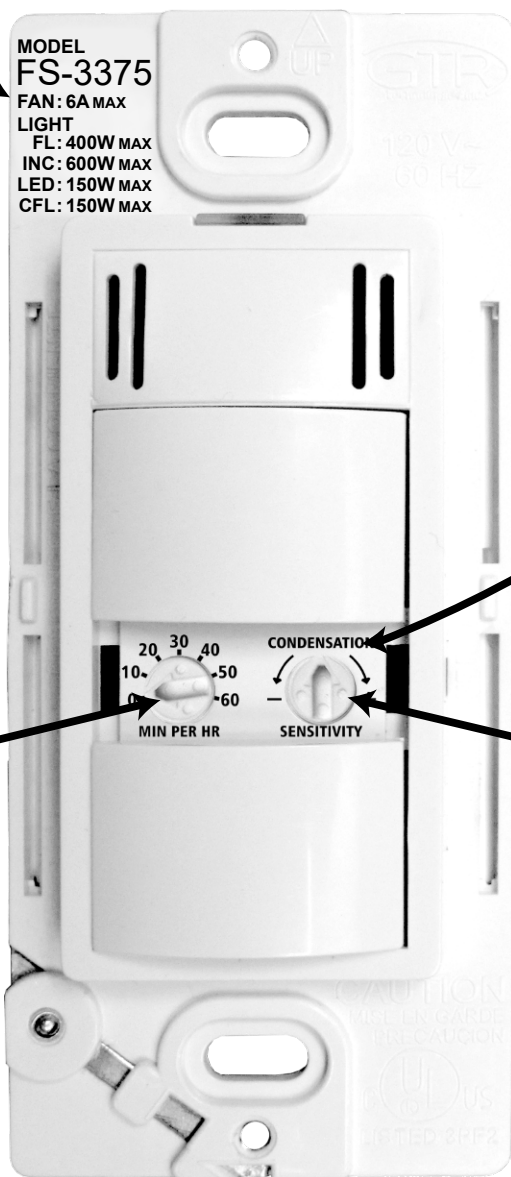
MODEL
FS-3375
FAN: 6A MAX
LIGHT
FL: 400W MAX
INC: 600W MAX
LED: 150W MAX
CFL: 150W MAX

20 30 40 CONDENSATION
10 50
0 60 - +
MIN PER HR SENSITIVITY

Settings Printing

20 30 40
10 50
0 60
MIN PER HR

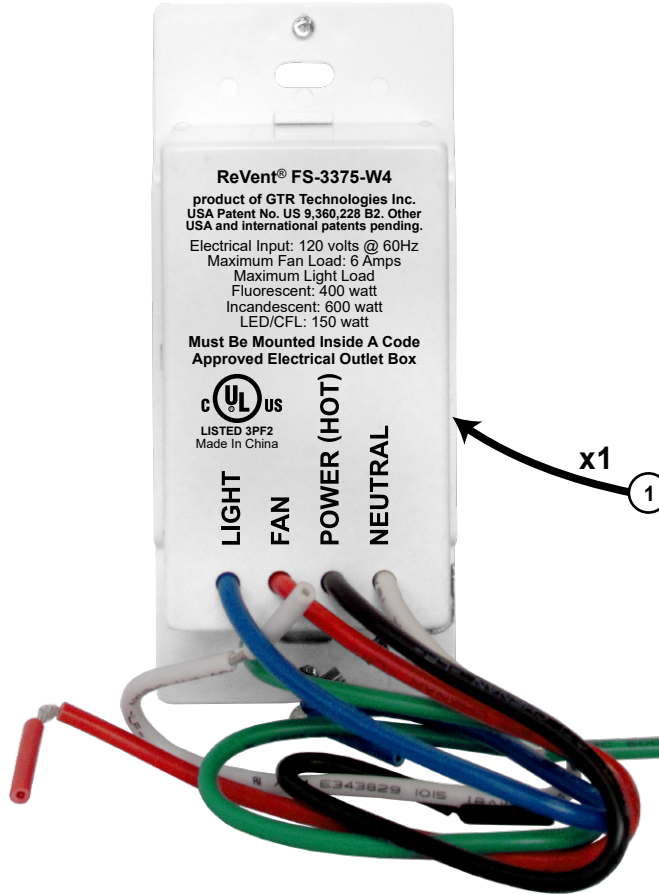
Set this dial to "0"



CONDENSATION
- +
SENSITIVITY

Set this dial to
the center of
"CONDENSATION"

FSA-3375-W-04



ReVent® FS-3375-W4
product of GTR Technologies Inc.
USA Patent No. US 9,360,228 B2. Other
USA and international patents pending.
Electrical Input: 120 volts @ 60Hz
Maximum Fan Load: 6 Amps
Maximum Light Load
Fluorescent: 400 watt
Incandescent: 600 watt
LED/CFL: 150 watt

**Must Be Mounted Inside A Code
Approved Electrical Outlet Box**



LIGHT
FAN
POWER (HOT)
NEUTRAL

ReVent® FS-3375-W4
product of GTR Technologies Inc.
USA Patent No. US 9,360,228 B2. Other
USA and international patents pending.

Electrical Input: 120 volts @ 60Hz
Maximum Fan Load: 6 Amps
Maximum Light Load
Fluorescent: 400 watt
Incandescent: 600 watt
LED/CFL: 150 watt

**Must Be Mounted Inside A Code
Approved Electrical Outlet Box**



LIGHT
FAN
POWER (HOT)
NEUTRAL

x1

1

REV LOG

REV DATE	MODEL/PART NO.	DISCRIPTION
2/11/2021	--	Original build
7/26/2021	FSA-3375-W4	Switched on-product label to laser printing (page 3)