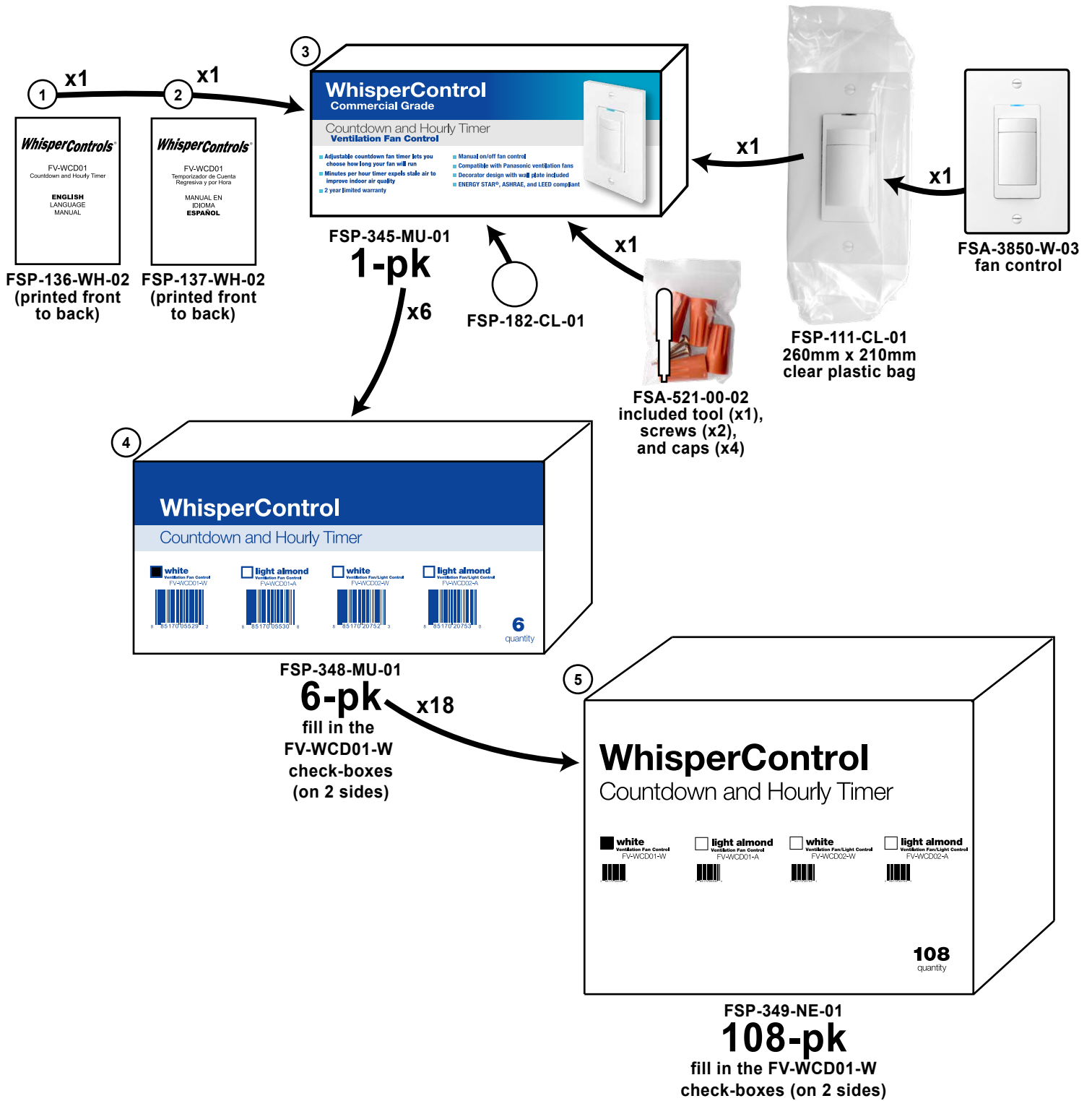


FS-3850-W3

7-7-2023



1: Panasonic_manual_FS-3850_English_070523.ai	4: Panasonic_box_6-pack_FS-3850-3875_050114.ai
2: Panasonic_manual_FS-3850_Spanish_070523.ai	5: Panasonic_box_108-pack_FS-3850-3875_050114.ai
3: Panasonic_box_1-pack_FS-3850-W3_050114.ai	

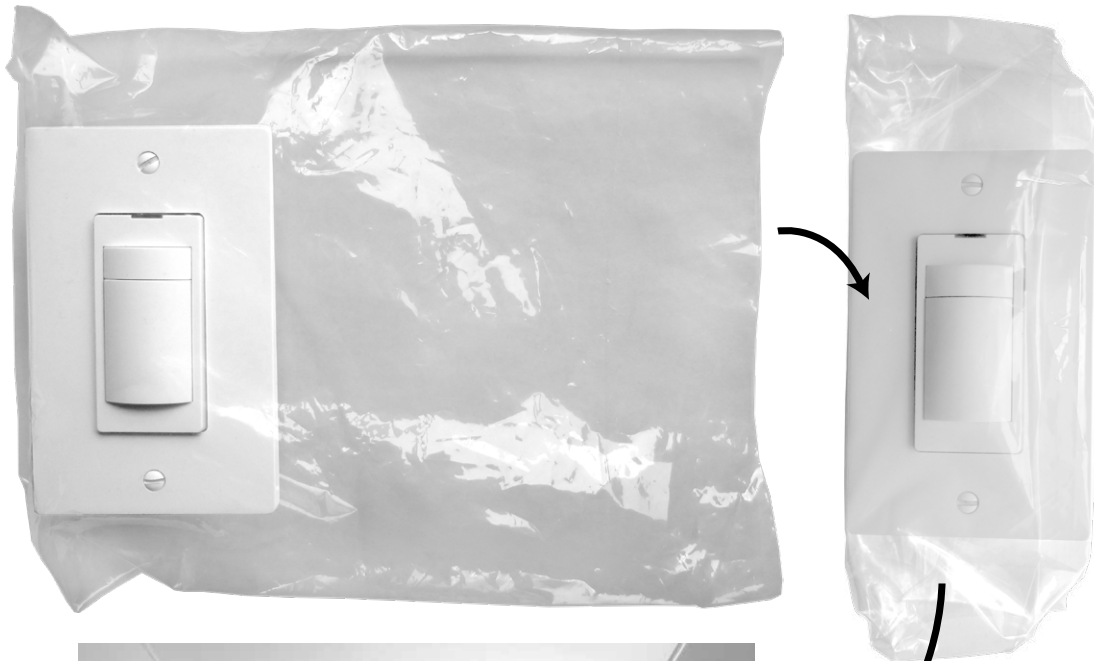
FS-3850-W3

Packing Steps:

- 1.) put a FSA-521-00-02 included tool, caps, and screws pack, a FSP-136-WH-02 English manual, and a FSP-137-WH-02 Spanish manual into a FSP-345-MU-01 1-pk box



- 2.) put a FSA-3850-W-03 fan control into a FSP-111-CL-01 260mm x 210mm clear plastic bag, fold to close, then place the bagged fan switch in the 1-pk box face up



- 3.) seal 1-pk box with a FSP-182-CL-01 round sealing label



FSA-3850-W-03

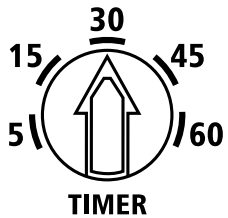
MODEL 3850
FV-WCD01
FAN: 8A MAX

Model Identification Printing

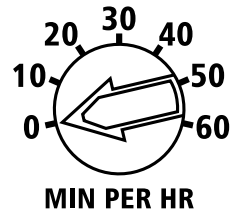
15 30 45 20 30 40
5 10 50
/60 0 -60
TIMER MIN PER HR

Settings Printing

MODEL 3850
FV-WCD01
FAN: 8A MAX

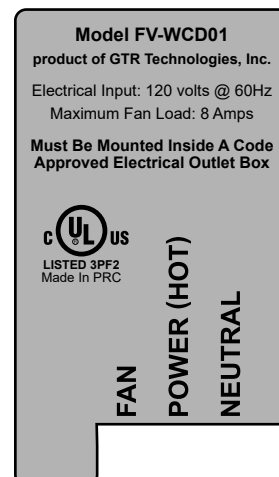


Set this dial to "30"



Set this dial to "0"

FSA-3850-W-03



x1

① FSP-221-SI-01
Panasonic
on-product label

REV LOG

REV DATE	MODEL/PART NO.	DISCRIPTION
12/4/2013	--	Original build
7/7/2023	RSP-136-WH-02	Updated manual (changed Go To Research to GTR, updated company info below warranty) (page 1)
	RSP-137-WH-02	Updated manual (changed Go To Research to GTR, updated company info below warranty) (page 1)