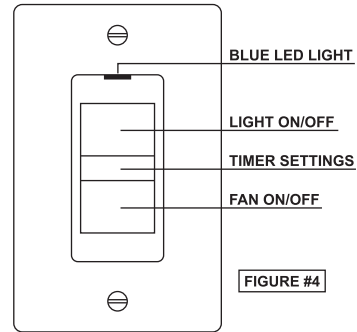


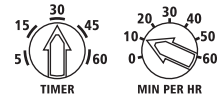
**(E.) CONTROL FUNCTIONS**



**Blue LED Light:** Lets you know when your fan is on (especially useful for fans with low sound levels).

**Light ON/OFF:** Turns light ON and OFF.

**Timer Settings:** Countdown timer (left) and minutes per hour (MPH) timer (right) settings (hidden behind a removable cover – see page 7 for details).

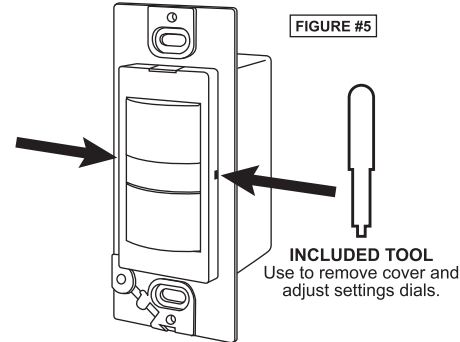


**Fan ON/OFF:** Turns countdown timer ON and OFF (can be used to temporarily override the MPH timer – see page 9 for details).

6

**(F.) CHANGING THE TIMER SETTINGS**

By default, this control comes with the countdown timer set to 30 minutes, and the MPH timer set to 0 minutes. To change the settings, remove the "Timer Settings" cover by taking off the face plate and then inserting the end of the included tool (or a **non-metal** tool of your own) into the two holes on either side of the control (see FIGURE #5). Use the included tool to turn the settings dials. The countdown timer can be set between 5–60 minutes. The MPH timer can be set between 0–60 minutes. Once you change a setting, the changes will take effect after the next ON/OFF cycle, so it's recommended that you turn your fan ON then OFF after you make a change to the settings.



7

**(G.) COUNTDOWN TIMER**

Pressing "Fan ON/OFF" switches the fan ON (and the blue LED light) ON and OFF. When the fan is turned ON manually, the countdown timer will run your fan for your selected period of time, then shut your fan OFF for you. For optimal use, we recommend adding together the time it takes you to shower with the time it takes your bathroom to dry off after you shower, then using that total as your setting for this timer.

**(H.) MINUTES PER HOUR (MPH) TIMER**

This timer runs your fan for a selected amount of time every hour, to help ensure good indoor air quality (it's also designed to help you more easily comply with indoor air quality standards). For example, set to "0", the MPH timer will never turn on. Set to "10", the MPH timer will turn your fan on 10 minutes every hour. Set to "60", the MPH timer will run your fan all the time.

8

**(I.) HOW BOTH TIMERS WORK TOGETHER**

**Credits:** The MPH timer is also programmed to give you "credits" for manual use. For example, if you manually run the fan for 10 minutes, and the MPH timer is set to 20 MPH, then the MPH timer will only run your fan for 10 minutes over the next hour, because you've already taken care of the rest. And this works within a rolling 3 hour window of time. For example, if the MPH timer is set to run your fan for 10 minutes per hour, and you run your fan manually for 40 minutes, the MPH timer will take 30 of the 40 minutes (discarding the extra 10 minutes) and recognize that it doesn't need to run the fan for the next three hours. And, if you run your fan for 40 minutes again sometime within the next 3 hours, the MPH timer will roll that forward and again not run your fan for the next 3 hours, starting from this latest manual use.

**Manual ON:** If the MPH timer has your fan ON when you want to use the countdown timer for a shower or bath, pressing the "Fan ON/OFF" button twice will cancel the MPH timer and start the countdown timer in it's place.

**Manual OFF:** If the MPH timer has your fan ON, and you manually turn it OFF, that cancels out the MPH timer for the hour (the MPH timer will resume normal function after one hour).

9

**(J.) TESTING THE CONTROL**

1. After you have completely installed this control, selected your timer settings, and attached the wall plate on the control, you can turn on the breaker to apply power.  
**WARNING:** If the breaker trips or the fuse blows, STOP and call a qualified electrician to investigate the problem. Turn the breaker OFF until the problem has been corrected.
2. Press the Fan ON/OFF button to see the fan turn ON, press the button again to see the fan turn OFF. Do the same for the Light ON/OFF button.

**ELECTRICAL SHOCK WARNING:**

This control is an automatic ON device. At no time should a person work on the fan/light or any appliance connected to this control without the electrical circuit breaker or fuse switched OFF. One of the control's timers could turn ON the attached device while the work is being performed. Always disconnect the AC power before any work is done to any part of the circuit this control is connected to. If you do not understand this warning seek the services of a qualified licensed electrician.

10

**(L.) TWO-YEAR LIMITED WARRANTY**

Go To Research Technologies, Inc. (GTR) warrants to the original consumer purchaser of its products that such products will be free from defects in materials & workmanship for a period of two years from the date of original purchase. There are no other warranties, express or implied, including but not limited to, implied warranties of merchantability or fitness for a particular purpose. During this two-year period, GTR will, at its option, repair or replace, without charge, any product or part which is found to be defective under normal use & service. This warranty does not extend to fluorescent lamp starters & tubes. This warranty does not cover (a) normal maintenance & service or (b) any maintenance or repair, faulty installation or installation contrary to recommended installation instructions. The duration of any implied warranty is limited to the two-year period as specified for the express warranty. Some areas do not allow limitation on how long an implied warranty lasts, so the above limitation may not apply to you. GTR's obligation to repair or replace, at GTR's option, shall be the purchaser's sole & exclusive remedy under this warranty. GTR shall not be liable for incidental, consequential, or special damages arising out of or in connection with product use or performance. Some areas do not allow the exclusion or limitation of incidental or consequential damages, so the above limitation may not apply to you. This warranty gives you specific legal rights, & you may also have other rights, which vary from area to area. This warranty supersedes all prior warranties. To qualify for warranty service, you must (a) notify GTR at the address stated below or via our website at [www.DewStop.com](http://www.DewStop.com), (b) give the model number & part number identification, & (c) describe the nature or any defect in the product or part. At the time of requesting warranty service, you must present evidence of the original purchase date.

Go To Research Technologies, Inc.  
[www.DewStop.com](http://www.DewStop.com)

11

COLORS:

- (c)0 (m)0 (y)0 (k)100  
Black
- (c)0 (m)0 (y)0 (k)0  
White

Paper Thickness: 0.06 mm

**Description:** FS-875 FS-3875 manual, English, reverse  
**Revision Date:** 5-1-2014

THIS ARTWORK IS THE PROPERTY OF GTR TECHNOLOGIES, INC. AND TRANSMITTED IN CONFIDENCE. THE REPRODUCTION, USE, OR DISCLOSURE, IN WHOLE OR IN PART, OF THE DESIGN AND DETAILS CONTAINED HEREIN IS PROHIBITED WITHOUT THE WRITTEN PERMISSION OF GTR TECHNOLOGIES, INC.

Made Using Adobe Illustrator CS v11.0.0  
(some boundary guides not visible in Acrobat Reader)