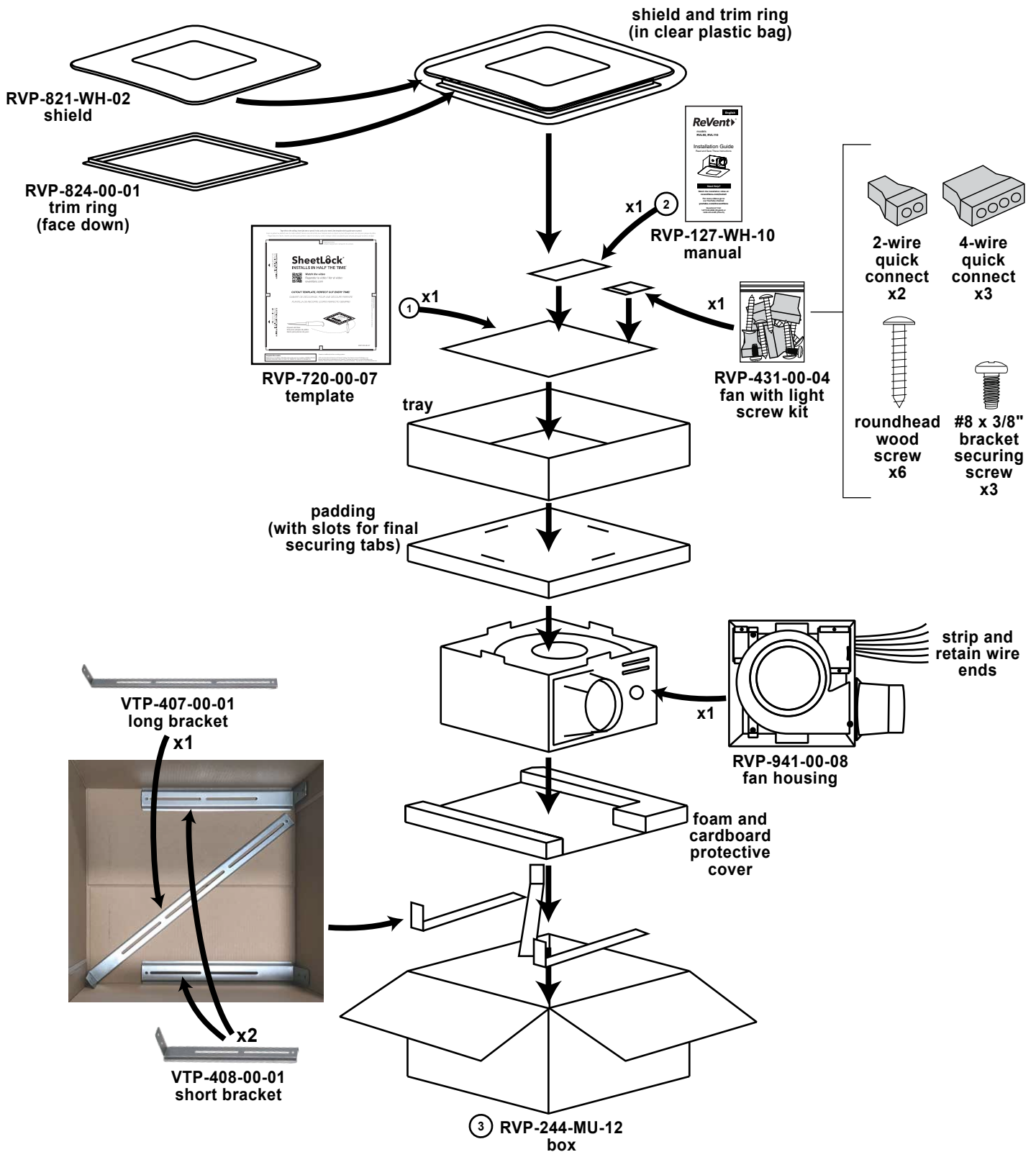


# RVL110-D-04

3-28-2024

## Build-To Sheet



1: ReVent\_90-110CFM\_template\_120723.ai

2: RVL90-110-D\_manual\_032824.ai

3: RVL110-D-04\_box\_032824.ai

# RVL110-D-04



RVP-244-MU-12  
box  
(shown closed and sealed)

# RVP-821-WH-02

## Label Placement (bottom of shield)



① set switch to 4000K



# RVP-941-00-08

## Label Placement

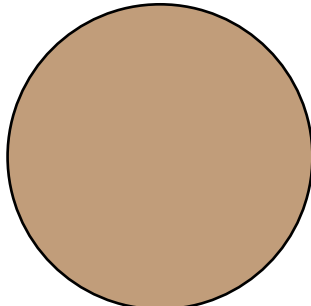
Date Code (YY-MM)

|                               |               |                   |           |  |          |            |             |             |   |
|-------------------------------|---------------|-------------------|-----------|--|----------|------------|-------------|-------------|---|
| <b>ReVent</b> VENTILATION FAN |               | <b>VENTILADOR</b> |           | <b>WARNING:</b> Acceptable for use over a bathtub or shower when installed in a GFCI protected branch circuit. |          |            |             |             |   |
| <b>MODEL</b>                  | <b>MODELO</b> | <b>V</b>          | <b>Hz</b> | <b>A</b>   | <b>W</b> | <b>CFM</b> | <b>SONE</b> | <b>DATE</b> | <b>CAUTION:</b> To reduce the risk of injury to persons, install fan at least 2.5m (8.2) above the floor. To reduce risk of fire and to properly exhaust air, be sure to duct air outside. DO NOT vent exhaust air into spaces within walls or ceilings or into attics, crawl spaces, or garages.<br><small>GTR Technologies Inc.</small> |
| RVL110                        |               | 120               | 60        | 0.36   | 43       | 110        | 0.8         | 20-09       |   |

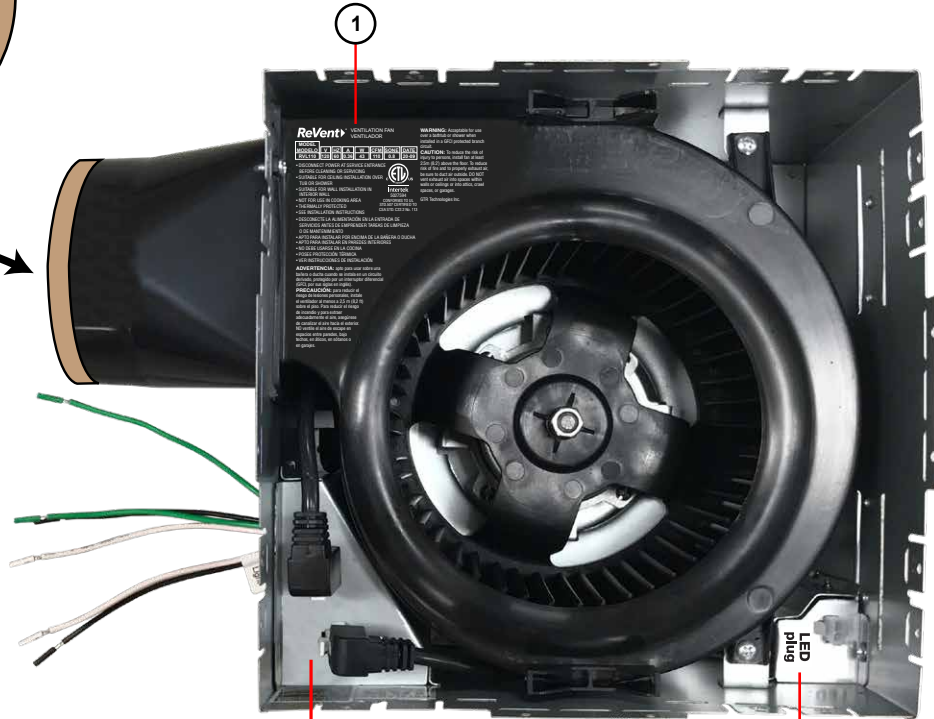
• DISCONNECT POWER AT SERVICE ENTRANCE BEFORE CLEANING OR SERVICING  
 • SUITABLE FOR CEILING INSTALLATION OVER TUB OR SHOWER  
 • SUITABLE FOR WALL INSTALLATION IN INTERIOR WALL  
 • NOT FOR USE IN COOKING AREA  
 • THERMALLY PROTECTED  
 • SEE INSTALLATION INSTRUCTIONS  
 • DESCONECTE LA ALIMENTACIÓN EN LA ENTRADA DE SERVICIOS ANTES DE EMPRENDER TAREAS DE LIMPIEZA O DE MANTENIMIENTO  
 • APTO PARA INSTALAR POR ENCIMA DE LA BAÑERA O DUCHA  
 • APTO PARA INSTALAR EN PAREDES INTERIORES  
 • NO DEBE USARSE EN LA COCINA  
 • POSEE PROTECCIÓN TÉRMICA  
 • VER INSTRUCCIONES DE INSTALACIÓN

**ADVERTENCIA:** apto para usar sobre una bañera o ducha cuando se instala en un circuito derivado, protegido por un interruptor diferencial (GFCI por sus siglas en inglés).  
**PRECAUCIÓN:** para reducir el riesgo de lesiones personales, instale el ventilador al menos a 2.5 m (8.2 ft) sobre el piso. Para reducir el riesgo de incendio y para extraer adecuadamente el aire, asegúrese de canalizar el aire hacia el exterior. NO ventile el aire de escape en espacios entre paredes, bajo techos, en áticos, en sótanos o en garajes.

ETL  
Intertek  
5107594  
CONFORMS TO UL  
STD. 507 CERTIFIED TO  
CSA STD. C22.2 No. 113



RVP-829-BR-01  
4" damper cover



2



3



4  
LED  
plug

1: RVL110-D-04\_laser-printing\_010324.ai

2: hvi\_label\_120318.ai

3: energy\_star\_label\_120318.ai

4: LED\_plug\_label\_020720.ai

# RVP-941-00-08

## Label Placement (bottom of motor)

Date Code (YY-MM)

**CAUTION:** This Motor APB28-4T should be used with housing RVXX110 only.

**ATTENTION :** Ce moteur APB28-4T doit être utilisé uniquement avec le boîtier RVXX110

**PRECAUCIÓN:** Este Motor APB28-4T deberá utilizarse solo con la cubierta RVXX110.

APB28-4T

120 V 60 Hz

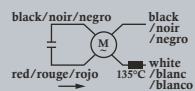
30 W 4T

Insulation A / Isolant A

3.4  $\mu$  F/250 V

Date : 20-09

black/noir/negro black /noir /negro  
white  
red/rouge/rojo 135°C /blanc /blanco



# REV LOG

| REV DATE   | MODEL/PART NO. | DISCRIPTION   |
|------------|----------------|---|
| 11/3/2018  | --             | Original build  |
| 11/5/2018  | RVL110-D       | Removed protective covers, added clear plastic bag  |
|            | RVP-941-00-01  | Modified information on motor labels  |
| 11/13/2018 | RVP-941-00-01  | Modified information on laser printing  |
|            | RVL110-D       | Updated manual and template art files   |
| 11/26/2018 | RVP-941-00-01  | Updated laser printing art file   |
| 12/5/2018  | RVL110-D       | Manual and box: changed grille dimensions for 50-70-80 models to 11"x11", Box: added 3yr warranty and rotated call for help graphics, Template: added part number, Brackets and bracket packing: packing to one piece and bracket positions changed |
|            | RVP-941-00-01  | Labels: separated damper hvi and energy star labels into separate files, Damper, motor labels, and laser printing: changed 2nd language from French to Spanish  |
| 12/20/2019 | RVP-720-00-02  | Changed artwork for template (added ®)  |
|            | RVP-941-00-02  | Changed artwork for laser printing (added ®)  |
|            | RVP-941-00-02  | Changed artwork for motor labels (it is now English/French/Spanish, RVXX-110)   |
|            | RVP-941-00-02  | Updated fan photos for accuracy   |
|            | RVP-244-MU-02  | Updated box art file (changed "grille" to "shield", changed "3 minute" to "1 minute", added ®, removed "-D")  |
|            | RVP-941-00-02  | Updated motor photo for accuracy  |
|            | RVP-431-00-02  | Updated fan with light screw kit (add a 3rd 4-wire quick connect)   |
| 12/23/2019 | RVP-120-WH-02  | Changed artwork for manual (added ®, updated FAQs, updated illustrations, changed "grille" to "shield")   |
|            | RVP-244-MU-02  | Updated box art file  |
| 2/7/2020   | RVP-120-WH-03  | Changed artwork for manual (updated to account for 3-L lighting)  |
|            | RVP-244-MU-03  | Updated box art file (added 3-L lighting graphics, new barcode)   |
|            | RVP-850-WH-02  | Updated shield to include 3-L lighting  |
| 2/21/2020  | RVP-120-WH-03  | Changed artwork for manual (updated 1/2" x #6 bracket securing screw illustration)  |
| 3/9/2020   | RVP-244-MU-04  | Updated box art file (updated 3-L lighting graphics)  |
|            | RVP-120-WH-04  | Changed artwork for manual (updated 3-L lighting specs)   |
| 3/11/2020  | RVP-244-MU-05  | Updated box art file (shifted lifestyle photo positioning)  |
| 10/29/2020 | RVP-941-00-02  | Updated labels and laser printing art files with new date code format (YY-MM)   |
|            | RVP-120-WH-05  | Changed artwork for manual (change dated 6/18/2020, not included in build-to until now)   |
| 7/12/2021  | RVP-821-WH-01  | Corrected shield part # (page 1)  |
|            | RVP-127-WH-01  | Switched to a dedicated RVL90-D/RVL110-D only manual (page 1)   |
|            | RVP-431-00-03  | Updated screw kit (page 1)  |
|            | RVP-720-00-04  | Updated template (added * to "Installs in half the time") (page 1)  |
|            | RVP-244-MU-06  | Updated box (added * to "Installs in half the time") (page 1-2)   |
|            | RVP-829-YL-01  | Added 4" damper cover (page 4)  |
|            | RVP-941-00-03  | Moved position of "LED plug" label to cover the enclosure hole (page 4)   |
| 9/27/2021  | RVP-941-00-03  | Updated fan laser printing to include sones (page 4)  |
|            | RVP-127-WH-01  | Updated manual (corrected performance specs [Sone, W, CFM] to match HVI report and removed HVI *, R40 changed to R-50) (page 1)   |
|            | RVP-244-MU-06  | Updated box (corrected performance specs [Sone, W, CFM] to match HVI report and removed HVI *, R40 changed to R-50) (page 1-2)  |
|            | RVP-941-00-03  | Updated fan laser printing (corrected performance specs [Sone, W, CFM] to match HVI/UL reports) (page 4)  |
| 11/5/2021  | RVP-127-WH-02  | Manual part # updated from -01 to -02 (page 1)  |
|            | RVP-431-00-04  | Screw kit part # updated from -03 to -04 (page 1)   |
|            | RVP-244-MU-07  | Updated box (added patent claim, added box part# to bottom of box) (page 1-2)   |
|            | RVP-941-00-04  | Fan housing part # updated from -03 to -04 (page 4)   |
| 12/1/2021  | RVP-127-WH-03  | Corrected manual (switched quick connects in for wire nuts on the What's Inside The Box page) (page 1)  |
| 5/12/2022  | RVP-127-WH-04  | Updated manual (changed sones to 0.9) (page 1)  |
|            | RVP-244-MU-08  | Updated box (changed sones to 0.9) (page 1-2)   |
|            | RVP-941-00-05  | Updated fan laser printing (changed sones to 0.9) (page 4)  |
| 5/18/2022  | RVP-127-WH-05  | Updated manual (changed sones to 0.8) (page 1)  |
|            | RVP-244-MU-09  | Updated box (changed sones to 0.8) (page 1-2)   |
|            | RVP-941-00-06  | Updated fan laser printing (changed sones to 0.8) (page 4)  |
| 5/20/2022  | RVP-941-00-07  | Updated motor label (changed 3.8uF to 3.4uF, merged the 2 labels into 1) (page 7)   |
| 8/26/2022  | RVP-127-WH-06  | Updated manual (changed W specs, changed patent claim to reference website) (page 1)  |
|            | RVP-720-00-05  | Updated template (changed patent claim to reference website) (page 1)   |
|            | RVP-245-MU-06  | Updated box (changed W specs, changed patent claim to reference website) (page 1-2)   |
| 1/11/2014  | RVP-821-WH-02  | Updated shield w 5 level lighting (page 1&3)  |
|            | RVP-127-WH-07  | Updated manual w 5 level lighting, new patent claim, YouTube link, front view of switches in wiring diagram, wire nut option, and 5-year warranty (page 1)  |
|            | RVP-244-MU-10  | Updated box art file (page 1-2)   |
|            | RVP-720-00-06  | Updated template (changed patent claim to current version, changed QR link to /install) (page 1)  |
|            | RVP-941-00-08  | Updated fan housing w ETL mark on laser printing, changed "UL W" to "W" on laser printing, removed UL label, combined previous 2 motor labels into one (page 4-5)   |
|            | RVP-829-BR-01  | Updated 4" damper cover to be thinner and made of brown paper (page 4)  |
| 1/22/2024  | RVP-720-00-07  | Updated template (added RVS80110 to part # list) (page 1)   |
| 1/30/2024  | RVP-244-MU-11  | Box file updated (SKU added) (page 1-2)   |
| 2/1/2024   | RVP-127-WH-08  | Updated manual (changed lighting spec from 3000K to 4000K) (page 1)   |
| 2/5/2024   | RVP-127-WH-09  | Updated manual (corrected RVL110 lighting spec) (page 1)  |
|            | RVP-821-WH-02  | Added "set switch to 4000K" instruction to build-to sheet (page 3)  |
| 3/28/2024  | RVP-127-WH-10  | Updated manual (changed phrasing of 1/d in Safety Information) (page 1)   |
|            | RVP-244-MU-12  | Updated box (added QR code linked to THD website, color change) (pages 1-2)   |