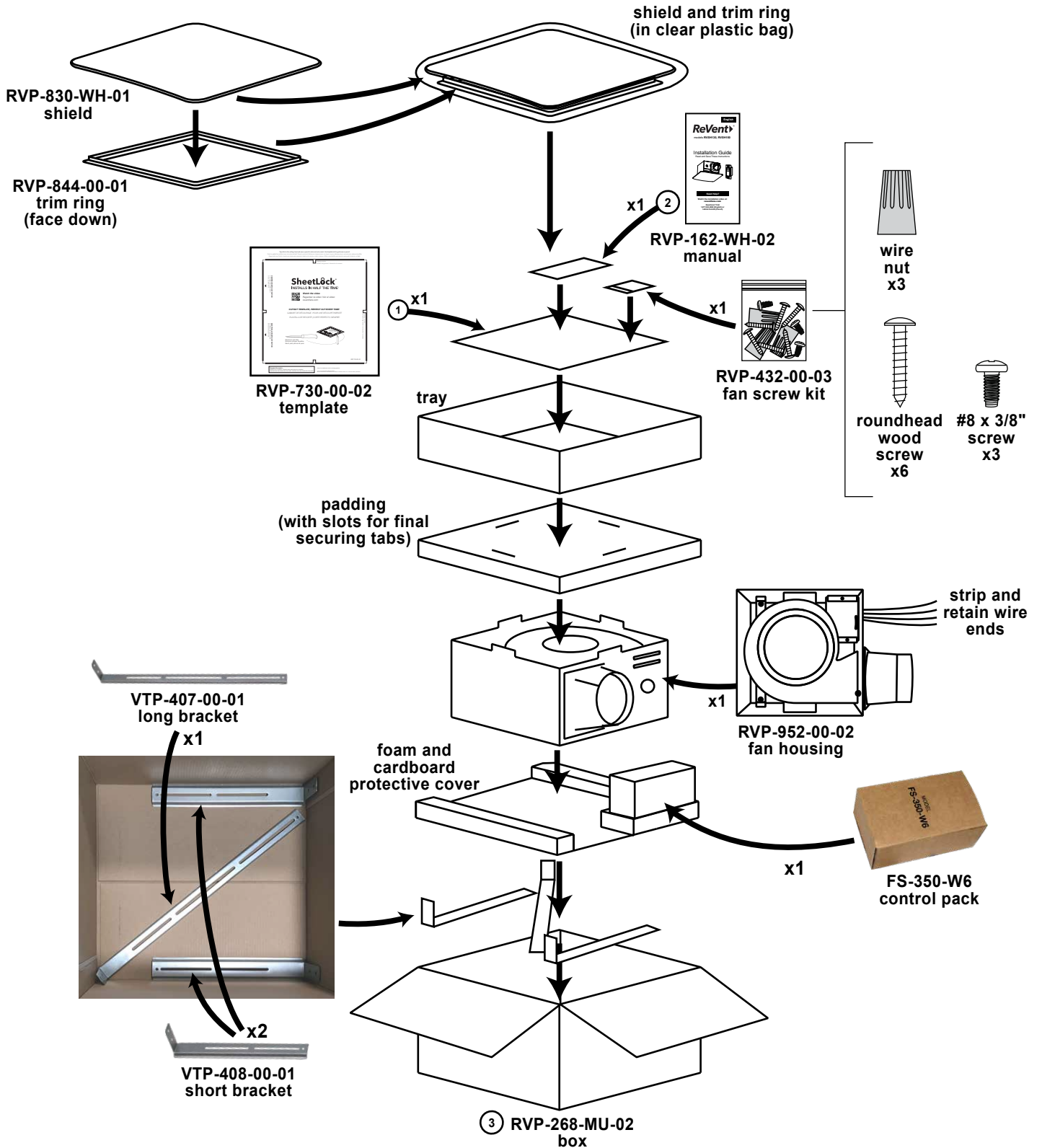


RVSH130

rev:11-8-2021

Build-To Sheet



1: ReVent_130-150CFM_template_051921.ai

3: 130CFM_wholesale-box_110821.ai

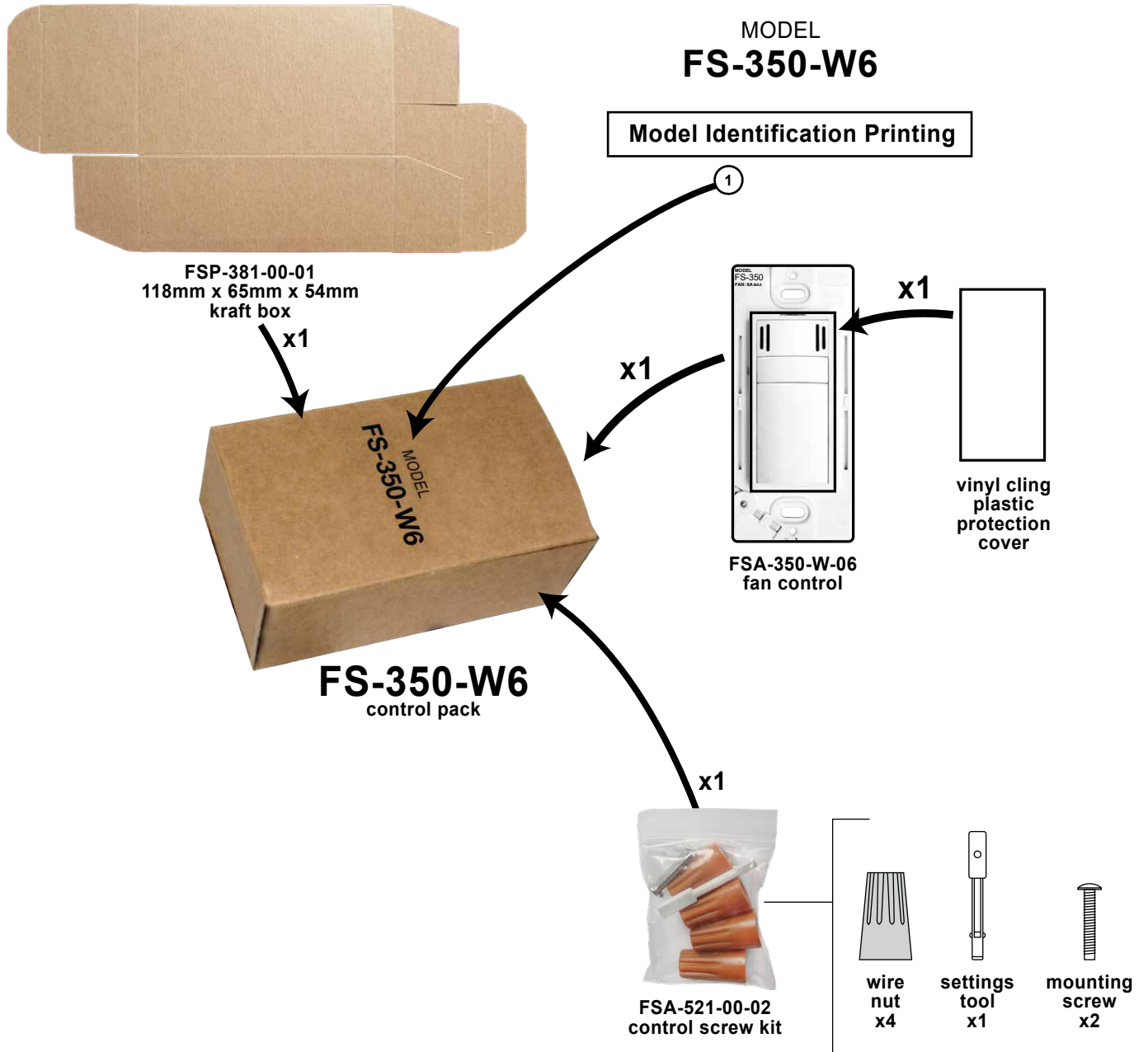
2: RVSH130-150_manual_110821.ai

RVSH130



RVP-268-MU-02
box
(shown closed and sealed)

FS-350-W6

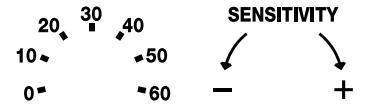


FSA-350-W-06

MODEL
FS-350
FAN: 6A MAX

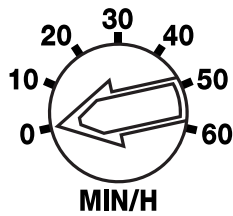
Model Identification Printing

1

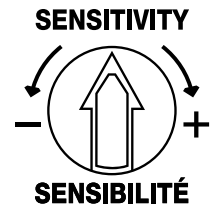


Settings Printing

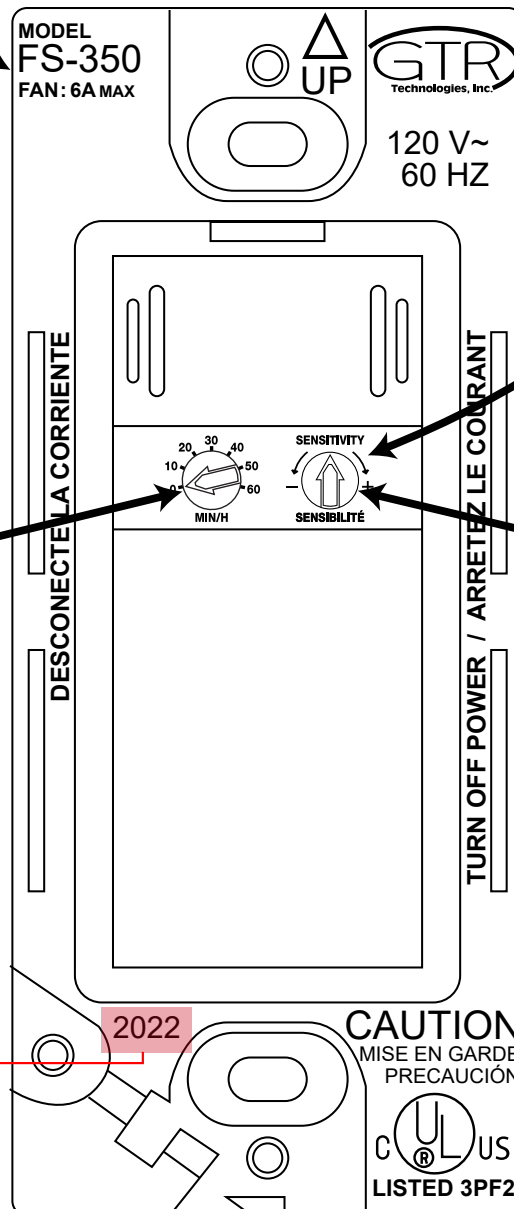
2



Set this dial to "0"



Set this dial to twelve o'clock



Date Code (YYWW)

FSA-350-W-06



ReVent® FS-350-W6
product of GTR Technologies Inc.
USA Patent No. US 9,360,228 B2. Other
USA and international patents pending.
Electrical Input: 120 volts @ 60Hz
Maximum Fan Load: 6 Amps
**Must Be Mounted Inside A Code
Approved Electrical Outlet Box**

1
UL US
LISTED 3PF2
Made In China

FAN
POWER (HOT)
NEUTRAL

RVP-952-00-02

Label Placement

Date Code (YY-MM)

Note: 6" damper covers not yet made, tape with damper label until covers are made

WARNING:
PLEASE REMOVE THE ADHESIVE TAPE BEFORE CONNECTING THE DUCT.

AVERTISSEMENT :
VEUILLEZ RETIRER CE RUBAN ADHÉSIF AVANT DE BRANCHER LA TUYAUTERIE.

ADVERTENCIA:
QUITE LA CINTA ADHESIVA ANTES DE CONECTAR EL CONDUCTO.



RVP-831-WH-01
6" damper cover

ReVent™ VENTILATION FAN
VENTILADOR

MODEL MODELO	V	HZ	A	UL W	CFM	SONE	DATE
RVS130	120	60	0.27	34	130	0.9	20-09

- DISCONNECT POWER AT SERVICE ENTRANCE BEFORE CLEANING OR SERVICING
- SUITABLE FOR CEILING INSTALLATION OVER TUB OR SHOWER
- SUITABLE FOR WALL INSTALLATION IN INTERIOR WALL
- NOT FOR USE IN COOKING AREA
- THERMALLY PROTECTED
- SEE INSTALLATION INSTRUCTIONS

- DESCONECTE LA ALIMENTACIÓN EN LA ENTRADA DE SERVICIOS ANTES DE EMPRENDER TAREAS DE LIMPIEZA O DE MANTENIMIENTO
- APTO PARA INSTALAR POR ENCIMA DE LA BAÑERA O DUCHA
- APTO PARA INSTALAR EN PAREDES INTERIORES
- NO DEBE USARSE EN LA COCINA
- POSEE PROTECCIÓN TÉRMICA
- VER INSTRUCCIONES DE INSTALACIÓN

WARNING: Acceptable for use over a bathtub or shower when installed in a GFCI protected branch circuit.

CAUTION: To reduce the risk of injury to persons, install fan at least 2.5m (8.2') above the floor. To reduce risk of fire and to properly exhaust air, be sure to duct air outside. DO NOT vent exhaust air into spaces within walls or ceilings or into attics, crawl spaces, or garages.

ADVERTENCIA: apto para usar sobre una bañera o ducha cuando se instala en un circuito derivado, protegido por un interruptor diferencial (GFCI, por sus siglas en inglés). **PRECAUCIÓN:** para reducir el riesgo de lesiones personales, instale el ventilador al menos a 2.5 m (8.2 ft) sobre el piso. Para reducir el riesgo de incendio y para extraer adecuadamente el aire, asegúrese de canalizar el aire hacia el exterior. NO ventile el aire de escape en espacios entre paredes, bajo techos, en áticos, en sótanos o en garajes.

GTR Technologies Inc.

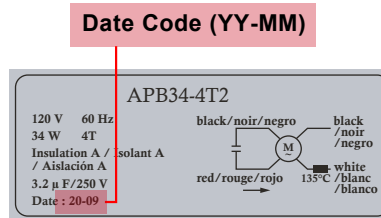


1: RVS130_laser-printing_110821.ai	3: energy_star_label_120318.ai
2: hvi_label_120318.ai	

RVP-952-00-02

Label Placement (bottom of motor)

CAUTION: This Motor APB34-4T2 should be used with housing RVXX130 only.
ATTENTION : Ce moteur APB34-4T2 doit être utilisé uniquement avec le boîtier RVXX130
PRECAUCIÓN: Este Motor APB34-4T2 deberá utilizarse solo con la cubierta RVXX130.



REV LOG

REV DATE	MODEL/PART NO.	DISCRIPTION
5/24/2021	--	Original build
7/7/2021	--	Updated foam and cardboard protective cover configuration + control box position (page 1)
	--	Updated padding to remove the corner cuttout (page 1)
11/8/2021	RVP-162-WH-02	Updated manual (corrected performance specs [Sone, W, CFM] to match HVI report and removed HVI *, R40 changed to R-50) (page 1)
	RVP-432-00-03	Screw kit part # updated from -02 to -03 (page 1)
	RVP-268-MU-02	Updated box (corrected performance specs [Sone, W, CFM] to match HVI report and removed HVI *, R40 changed to R-50, added patent claim, added box part# to bottom of box, split model ID boxes into 2 sections) (page 1-2)
	RVP-952-00-02	Updated fan laser printing (corrected performance specs [Sone, W, CFM] to match HVI/UL reports) (page 6)